

PRACTICE IN TOUCH FEBRUARY NEWSLETTER

ISSUE 29 • FEBRUARY 2022



LINCOLNSHIRE LMC NEWSLETTER

BY LINCOLNSHIRE LMC SECRETARIAT

Welcome to our monthly newsletter.

To look at our past newsletters please go to:
www.lincslmc.co.uk/newsletters

For more information on the articles published in
this newsletter, please contact:
info@lincslmc.co.uk

To keep up to date with the latest LMC
information follow us on social media:
[@LincolnshireLMC](https://twitter.com/LincolnshireLMC)

LINCOLNSHIRE LMC NEWSLETTER

TABLE OF CONTENTS

[Updated primary care
antimicrobial prescribing
guidelines • P. 2](#)

[COVID-19 Solicitors Letters
& GPC Elections • P. 3](#)

[Emergency contact details
for hospitals & Return to
work • P. 4](#)

[Digi-health webinar &
Lincolnshire LMC GP
Society • P. 5](#)

[Cameron fund video &
Lincs LMC Educational
Webinars • P. 6](#)

[Event: Save the Date &
Lincs LMC Information
Pack • P. 7](#)

[Follow us on Social Media
& Useful Links • P. 8](#)

[Vacancies • P. 9](#)

[LMC Development Centre
& Our services • P. 10](#)

UPDATED PRIMARY CARE ANTIMICROBIAL PRESCRIBING GUIDELINES

BY KIERAN SHARROCK

Please find a copy of the updated primary care antimicrobial prescribing guidelines attached on this page: www.lincolnshire.nhs.uk/updatedantimicrobialprescribingguidelines

These are based on the NICE antimicrobial prescribing guidance for the management of common infections and has been adapted for use in Lincolnshire taking into account local guidance and resistance patterns.

As agreed at previous PACEF and ULHT DTC meetings the review of the clinical content has been led by ULHT based consultant microbiologists and the ULHT Antimicrobial Pharmacy Service and the clinical content has been approved by the ULHT hosted Antimicrobial Stewardship Strategy Group at meetings held on 18th January and 8th February and the Antimicrobial Stewardship (AMS) Lincolnshire Meeting held on 2nd February.

Changes from previous guideline:

- Recommendations have been updated to reflect new content of relevant NICE guidelines.
- The guideline now contains links to both BNF's and the MicroGuide.
- There is also a table of contents to make it easier to navigate the guidance.
- The template has been changed to make it easier to read information with two main columns the first containing main key points to aid the management of the condition and the second column to contain details of medicine doses and duration of treatment courses.
- Throughout the document there are links to NICE guidance, resources on CKS

MicroGuide | Community Antimicrobial Guides:
Community Antimicrobial Guides (microguide.global)

This MicroGuide is updated regularly and can be accessed through desktop or the MicroGuide smartphone app.

SOLICITOR LETTERS REGARDING COVID-19 VACCINATION

BY KIERAN SHARROCK

Practices and PCNs have been receiving letters from a legal firm stating that Covid-19 vaccination is not legal and that individuals can be subject to litigation for participating in the vaccination campaign. We have been reassured that this is not the case, and that Covid legislation legitimises the vaccination campaign.



GPC ELECTIONS AND NOMINATIONS

B M A



Elections to GPC are taking place in your region, want to get involved?

If you are a BMA member and you would like to represent colleagues in your region now is your chance.



Nominations open **7th February** at midday and close on **7th March** at midday.

The elections to the General Practitioners Committee are now open.

The BMA will be seeking nominations from representatives in your region, anyone wishing to stand for election must be a member of the BMA.

Nominations now open, set to close on Monday 7th March at midday.

To submit a nomination go to elections.bma.org.uk

For more information email the team elections@bma.org.uk

EMERGENCY CONTACT DETAILS FOR HOSPITALS

BY KIERAN SHARROCK

When making an emergency referral to hospitals it is best practice to discuss the patient with the on-call specialist in advance of referral. This has traditionally been difficult due to problems with switchboards and getting in contact with the specialist. To facilitate this, we have asked for, and now been provided with, a list of contact details for hospitals in and around Lincolnshire which practices can use when making referrals.

This list is available on the LMC website:
www.lincslmc.co.uk/emergencycontactdetailsforhospitals



RETURN TO WORK

NOTTINGHAMSHIRE GENERAL PRACTICE PHOENIX PROGRAMME

Return to work survival series:

- 4th March - Session 1: Top tips for return to work, maximising efficiency and how to stay afloat once back.
- 11th March - Session 2: Wellbeing
- 18th March - Session 3: Career planning and making General Practice sustainable for the long term.

For more information please go to: [Return to Work | Nottinghamshire General Practice Phoenix Programme](#)

RETURN TO WORK SURVIVAL SERIES



Sessions are open to any GP who has been away from work for more than 3 months:

[Back to contents page](#)

LMC Newsletter - Page 4

DIGI-HEALTH WEBINAR

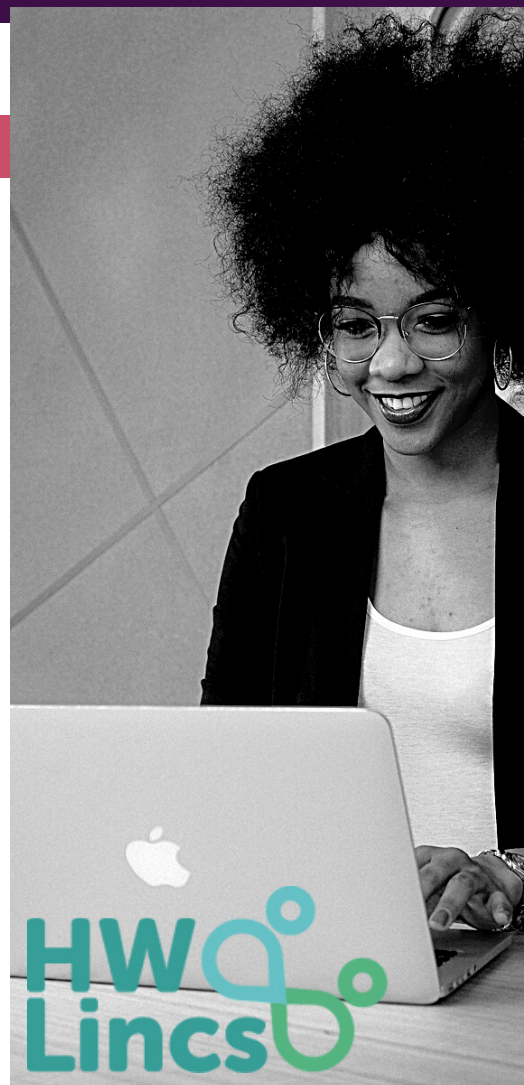
BY HEALTHWATCH LINCOLNSHIRE

Across the county of Lincolnshire, there are over 800,000 people registered for healthcare services with their local GP practice. Of those 800,000 people, just over a third are signed up for digital services; with only 10% of the total Lincolnshire population enabled to view their own medical record with their registered practice. Our intent is to improve that.

The Digihealth concept is to provide information, advice, guidance and support to enable people of Lincolnshire to better understand the use of digital opportunities when accessing their healthcare services.

Supported and funded by the NHS Lincolnshire Clinical Commissioning Group, and with the assistance of three local doctors, HW Lincs have put together an informative webinar that provides information for Lincolnshire patients about the digital services available to them, and how they can support their surgeries to gain the most effective access.

Link to webinar: <https://hwlincs.co.uk/digi-health/>



LINCOLNSHIRE LMC GP SOCIETY

BY LINCOLNSHIRE LMC

The LMC has partnered with local Lincolnshire GPs to establish a GP Society with the aim of developing supportive relationships and networks within the Lincolnshire GP Community. Meetings to take place every other month and will provide a great opportunity to socialise, network with peers and record some educational time for your appraisal.

To make them as accessible as possible, the meetings will happen in the evening across three locations, (east, west and south/southwest).

If you are interested and would like to attend a meeting please visit our training & events page. Training and Events link: www.lincsllmc.co.uk/events

lincolnshire *llmc*
supporting lincolnshire's general practices to provide *great care*

Lincolnshire GP Society

EAST



WEST



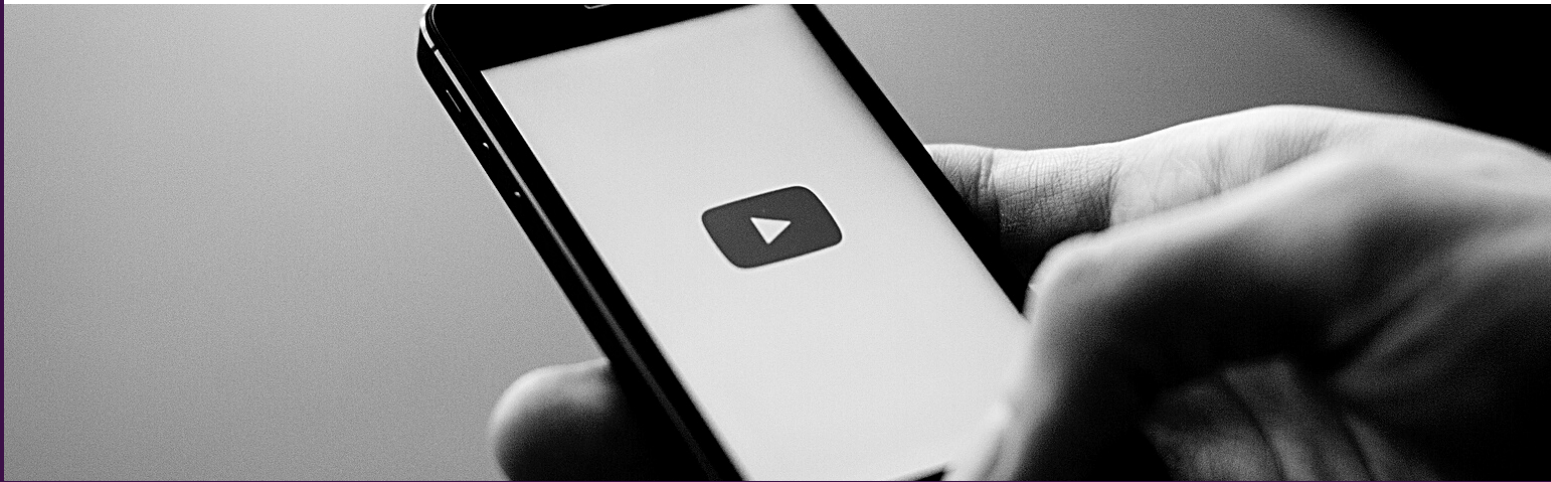
SOUTH

CAMERON FUND VIDEO: OUR HISTORY

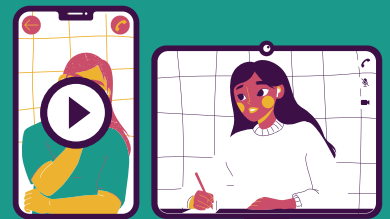
BY THE CAMERON FUND

The Cameron fund have created a short video explains a bit more about our beginnings, how we have grown and who we help today

To view this video please go to: [CF video 6 Our history – YouTube](#)



Lincolnshire LMC Educational Webinars



The Lincolnshire LMC run short educational webinars aimed at GPs and other practice staff who find it a challenge to take time away from their practice to travel to training. Our range of educational webinars can be found here:

www.lincslmc.co.uk/educationalwebinars



Friday 15th July 2022 - Evening

A very special occasion for our General Practice Heroes.

Save the Date!

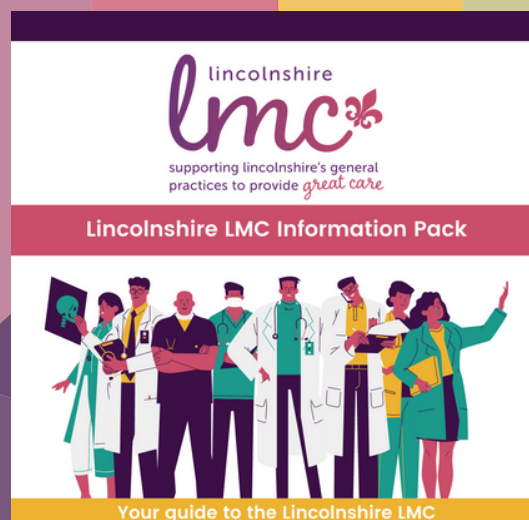
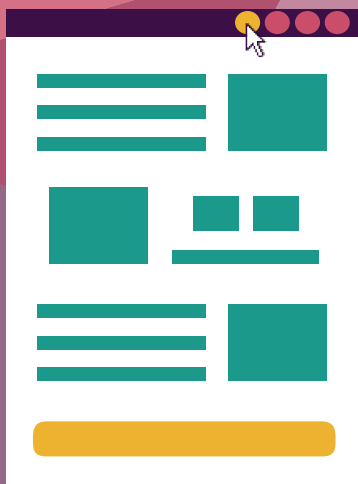
We will be shining light on the incredible work you do, to thank all general practice staff, to reflect and to look forward to a positive future!

This event includes dinner, entertainment and some special guests.

All Lincolnshire general practice staff are invited.

Invitations to be sent shortly.

Lincolnshire LMC Information Pack



Our information pack contains useful resources to ensure you and your practice receive the best support from us. You can access the pack by scanning the QR code or by going to our dedicated webpage:

www.lincsllmc.co.uk/informationpack

FOLLOW US ON SOCIAL MEDIA

To ensure you keep up to date with the latest information from the Lincolnshire LMC Follow us on:

@LincolnshireLMC



twitter



facebook



Instagram

USEFUL LINKS

Training resources:

- [Lincolnshire Training Hub](#)
- [E-Learning for Health \(e-LfH\) Programmes](#)
- [NB Medical Education](#)
- [GP Forum CPD Opportunities](#)

Resources:

- [We are with you](#)

Networking:

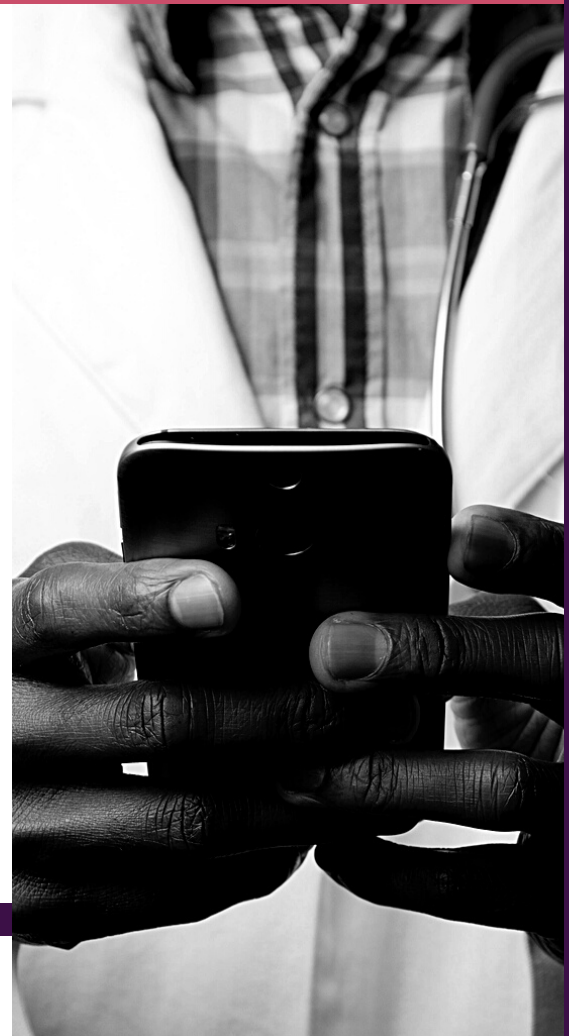
- [Lincoln Medical Society](#)

Newsletters:

- [Sessional GPs e-newsletter](#)
- [GP Weekly Bulletin \(England\)](#)
- [GP Trainee Newsletter](#)
- [Practice Manager Association News](#)
- [One You Lincolnshire newsletter](#)

Buying Group:

- [Latest LMC Buying Group Update](#)



VACANCIES IN LINCOLNSHIRE GENERAL PRACTICE

To view each listing please click on the vacancy titles.



Advanced Nurse Practitioner – Swingbridge Surgery

Vacancy Ref: A3638-22-1039

Advanced Nurse Practitioner – Cleveland Surgery

Vacancy Ref: A3638-22-6427

Advanced Nurse Practitioner – New Coningsby Surgery

Vacancy Ref: A3638-22-8502

Deputy Practice Manager – The Deepings Practice

E: recruitment.deepingspractice@nhs.net | T:01778 579000

Health Care Assistant – Swingbridge Surgery

E: hr@welbyhealth.co.uk

Nurse team leader –The Deepings Practice

E: recruitment.deepingspractice@nhs.net | T:01778 579000

Practice Nurse – Abbeyview Surgery

E: helenherbert@nhs.net | T: 01733 210254

Receptionist – The New Springwells Practice

E: jane.parry@nhs.net | Vacancy Ref: A1587-22-1279

Salaried GP – Caistor Health Centre

E: LECCG.C83613@nhs.net | T:01472 851203

Salaried GP – The Deepings Practice

E: recruitment.deepingspractice@nhs.net | T:01778 579000

Salaried GP – New Coningsby Surgery

E: amanda.bell15@nhs.net

If you would like your job listing advertised on our website, please send the advert to laura.dexter1@nhs.net.

Your advert should only be one A4 page and should include:

- Job title
- Location
- Practice logo or image
- Short overview of the role or the practice.
- Salary and any benefits
- Contact information & link to your practice's website
- Closing date of job listing

Alternatively you can your job listing here: **Create Listing**. Note this will have to be approved by a Lincolnshire LMC administrator

All vacancies can be found at: www.lincsllmc.co.uk/jobs

UPCOMING TRAINING AND EVENTS

Travel Health Update: 10.03.2022 in the morning – Last few places remaining **BOOK NOW!**

GP Psychiatry Session provided by the Lincolnshire Training Hub: Personality Disorder with Professor Peter Tyrer. Date: 15.03.2022 in the evening. **CLICK HERE** to book your place.

Improving the Patient Experience – 23.03.2022 in the afternoon. **CLICK HERE** to book your place.

Other clinical and non-clinical courses are available for Lincolnshire practice staff on our LMC training and events page. If you require some training that is not listed please let us know by completing our training needs form and returning it to: rosa.wyldeman@nhs.net

SAVE THE DATE: Friday 15th July: Lincolnshire covid-19 recognition and reflection evening



IMPACT
lincs
take-30
AND LET'S TALK



OUR SERVICES

www.lincslmc.co.uk/impactlincs

Mentoring & Coaching Service:

Mentoring & coaching can benefit you and your organisation in many ways.

Our trained mentors can support you to make positive steps forward in your career and personal life. Mentoring sessions can take place at a time & place to suit you.

Take-30

This service aimed at providing confidential peer support for busy GP's, Practice Managers, Nurses & all other Practice Staff Members as they work through everyday challenges.

This service is available free of charge for all Lincolnshire General Practice Staff between 10am & 4pm for initial contact, Monday to Friday.

To find out more about both of these services, contact us: Email: info@lincslmc.co.uk or call: 01522 576659