



"Supporting Lincolnshire's
general practices to provide
great care"

PRACTICE IN TOUCH

JUNE NEWSLETTER

ISSUE 22 • JUNE 2021



LINCOLNSHIRE LMC NEWSLETTER

BY LINCOLNSHIRE LMC SECRETARIAT

Welcome to our monthly newsletter.

To look at our past newsletters please go to:

www.lincslmc.co.uk/newsletters

For more information on the articles published in this
newsletter, please contact: info@lincslmc.co.uk

LINCOLNSHIRE LMC NEWSLETTER

TABLE OF CONTENTS

CQC: New monitoring
approach • P. 2

NHSE: Two new enhanced
services & New PCSE GP Pay
P. 3

GMC and NMC numbers in
correspondence & NHS
Cervical Screening • P. 4

Extension to GPAD & Shared
Parental Leave for GPs • P. 5

Dementia Pathway & Visa
Sponsorship • P. 6

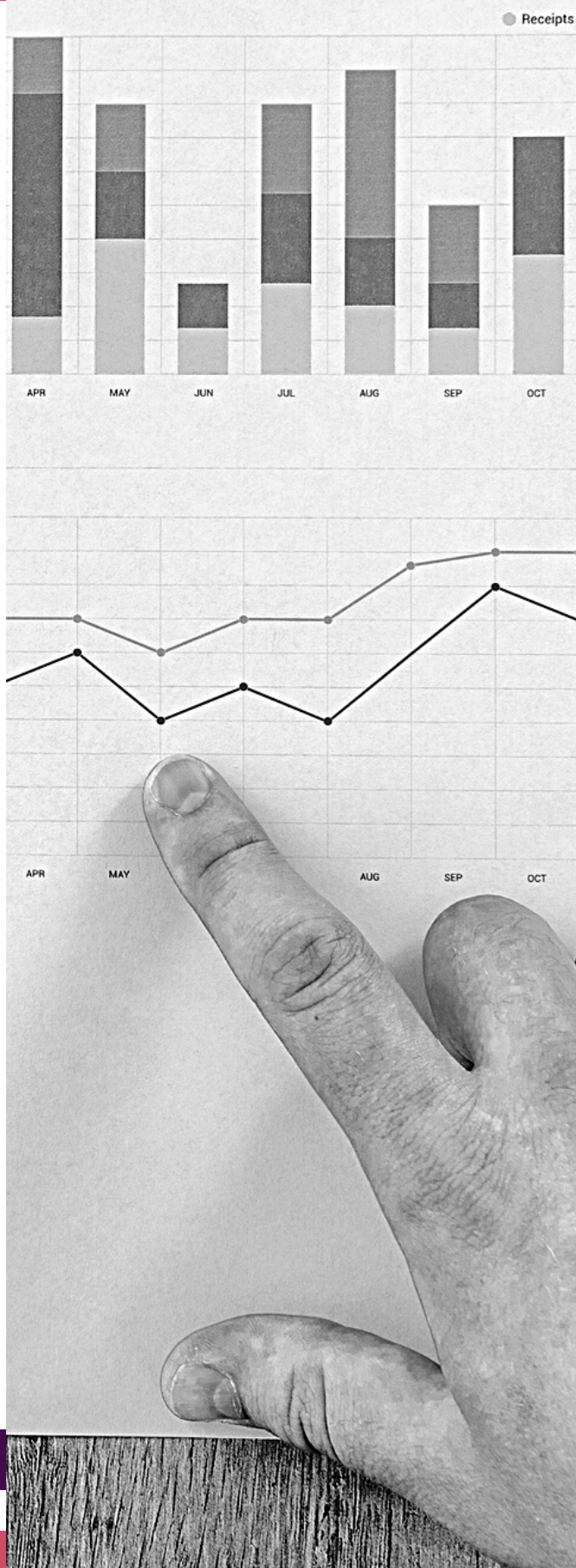
New PCN Handbook & Useful
Links • P. 7

Vacancies • P. 8

LMC Development Centre &
Our services • P. 9

CQC: NEW MONITORING APPROACH

BY KATE PILTON



The Care Quality Commission (CQC) are moving on from their transitional monitoring approach and are introducing a new monthly check of the information and data they hold on GP practices. Find out more about these changes by attending our CQC update on Tuesday 6 July. Speakers include, Amanda Reynolds, CQC Regional Manager & Chris Jarvis, CQC Inspector. Book your place here Lincolnshire LMC: Event details: [CQC Update Event \(lincs.lmc.co.uk\)](https://lincs.lmc.co.uk).

This monthly review will also involve the CQC publishing a statement on their website for your practice. This will let patients know that the CQC have not found any evidence that tells them they need to re-assess the rating or quality of care at that service at that time.

If your allocated CQC inspector has any concerns about the data/information they have received they will contact your practice in the first instance to discuss this with you.

For perceived higher risk services CQC will carry out an inspection.

As part of these changes, from 15 June 2021, you may notice a statement appearing on your page on the CQC website. You will receive an email the day before it goes up on the services' page on our website letting you know.

Practices will no longer be contacted on an annual basis for a telephone interview. Further details are available in the CQC draft monitoring approach provider guidance.

Additional Attachment: 'CQC draft monitoring approach provider guidance.pdf' can be found by following the link below.

For more information and a list of services and evidence can be found at: [Lincolnshire LMC: CQC - New monitoring approach for GP practices](#)

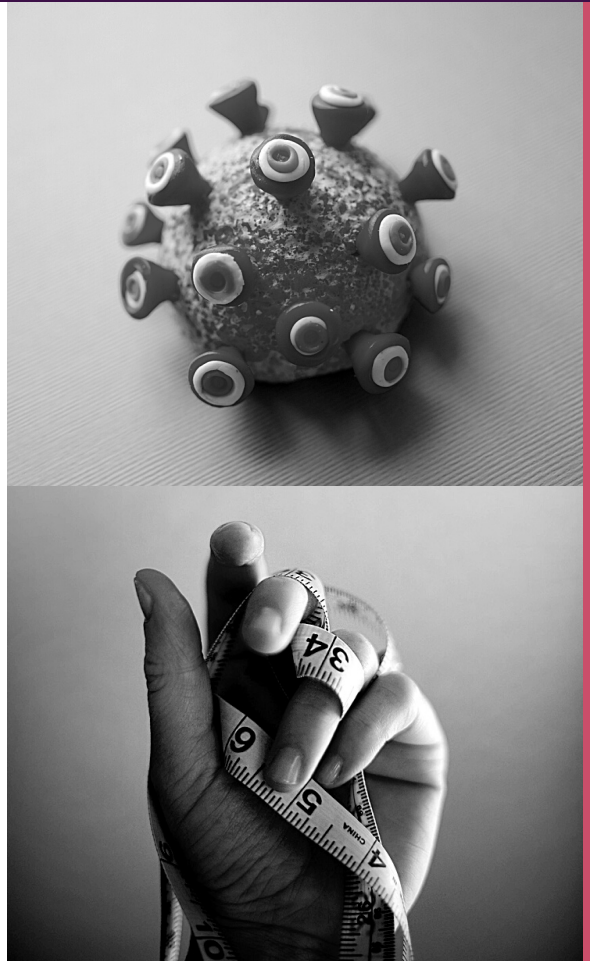
NHSE: TWO NEW ENHANCED SERVICES

BY KATE PILTON

NHS England is offering practices the voluntary opportunity to participate in two new enhanced services from 1 July 2021. These focus on two areas which are a priority to support recovery from the pandemic: long COVID and weight management.

Details about the new enhanced services are set out at Annexes A and B of Letter: **[update to GP contract arrangements for 2021/22 \(england.nhs.uk\)](#)**

For more information on the two new enhanced services please go to: **[Lincolnshire LMC: Two new enhanced services available from 1 July 2021](#)**



NEW PCSE GP PAY & PENSION PORTAL

BY KATE PILTON

This new online service to help administer practice payments and GP Pensions is now live.

What's new:

Statements: Practice statements are now accessed via PCSE Online, and will no longer be available via Open Exeter from 1 June 2021. Practices can access their statements data from the 2014/15 financial year to present day.

New pensions services: Practices will also be able to access a range of related pension services, such as completing the annual estimate of pensionable profit, notifying PCSE of new joiners and leavers to the NHS Pensions Scheme and approving Locum A forms.

Premises and locum cover claims: The new online GP Payments service also enables Practices to submit premises claims and locum cover claims online (Note: please check with your CCG when they are ready to start accepting claims submitted via PCSE online).

For more detail on all of these services, as well as information on how to request access to the new services, click on the following link [Practices - Primary Care Support England](#)



GMC AND NMC NUMBERS IN CORRESPONDENCE

BY KIERAN SHARROCK

Practitioners should include their GMC or NMC number in all correspondence.

GMC guidance states that it is good practice to have GMC number on all professional correspondence. Radiology requests must have GMC or NMC number included as this is required for IRMER purposes.

Ardens and the CCG are updating all the Lincolnshire referral forms to include a box for GMC/NMC number. This cannot be auto populated so practitioners or admin teams should manually insert the GMC or NMC number into these fields.



NHS CERVICAL SCREENING MANAGEMENT SYSTEM

BY KATE PILTON

To be introduced on 30 October

NHS Digital has been commissioned by NHSX to develop and implement a new IT system, which they say will be simpler and easier to use. It will replace the current call/recall IT system for cervical screening, which sits on the National Health Application and Infrastructure Services platform. As a first step in the transition to the new system, NHS Digital will be working closely with local IT teams and registration authorities for providers to ensure readiness. We will keep you updated on developments.



EXTENSION TO APPOINTMENT MAPPING DEADLINE (GPAD)

BY KATE PILTON

Some GP system suppliers have experienced unforeseen problems and delays in rollout of functionality to map slot types to the new national categories. To give all practices sufficient time to map all active slot types, NHS England & NHS Improvement (NHSEI) has decided to extend the deadline for confirmation of compliance with the requirements set out in **ACC-01** by one calendar month, from 30 June to 31 July 2021.

This article can also be found on our news section of our website: [**Lincolnshire LMC: News**](#)



ENHANCED SHARED PARENTAL LEAVE SYSTEM FOR SALARIED GPS

BY KATE PILTON

The new enhanced shared parental leave system for salaried GPs has been launched across the UK and will allow for up to 50 weeks of the 52 weeks maternity leave to be shared between the parents. Eligible parents are also able to share up to 37 weeks of statutory shared parental pay (equivalent of statutory maternity pay).

To view the full article please go to: [**Lincolnshire LMC: Enhanced shared parental leave system for salaried GPs**](#)



DEMENTIA PATHWAY

BY ROSA WYLDEMAN

A new dementia pathway has been developed by Primary Care in conjunction with the LMC, Lincolnshire Partnership Foundation Trust (LPFT) and other care providers. It is for over 65yr olds presenting with symptoms suggestive of dementia and is intended to act as a guide to navigate the practitioner through the patient journey from presenting symptoms, to diagnosis and post-diagnostic care and support.

You can view and download the new pathway via this link: **[GP Dementia Pathway - 080421.pdf](#)** (lincolnshirecommunityhealthservices.nhs.uk). An accompanying guide is also available **[here](#)**.

Further detail can be found on the **[LMC website](#)** including an educational webinar covering the topic and supporting information.

For full guidance and relevant attachments please go to: **[Lincolnshire LMC: CQC - New Dementia Pathway](#)**.



VISA SPONSORSHIP

BY ROSA WYLDEMAN

NHSEI have developed some guidance for practices who may be planning to act as a sponsor for newly CCT'd GP trainees who have visa requirements. A useful guide can be accessed via the **[.GOV website](#)** or for more information go to the LMC website.

There was a recent webinar, led by the Home Office which provided a step by step guide on how to apply for a visa sponsorship licence, we have been informed that the recording from this event will be made available soon.

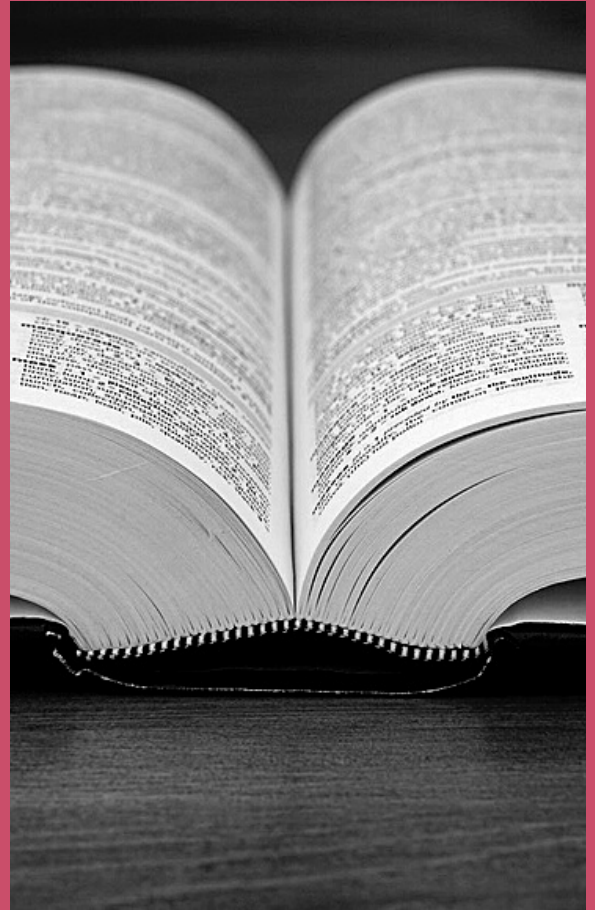
There are also resources available for international doctors wishing to work in the NHS, these links and attachments can be found on our guidance page: **[Lincolnshire LMC: Visa Sponsorship](#)**

NEW PCN HANDBOOK

BY KATE PILTON

The new PCN handbook for 2021/22 has now been published and is available on the BMA [website](#). The handbook has been updated to include the changes agreed as part of the 2021/22 [GP contract](#), including additional ARRS workforce and new PCN service specifications, as well as other operational aspects. The full service specification setting out the requirements of the PCN DES for 2021/22, as well as further guidance, is also available from [NHS England](#).

This article can also be found on our guidance page: [Lincolnshire LMC: New PCN handbook](#)



USEFUL LINKS

BY LINCOLNSHIRE LMC

Training resources:

- [Lincolnshire Training Hub](#)
- [E-Learning for Health \(e-LfH\) Programmes](#)
- [NB Medical Education](#)
- [GP Forum CPD Opportunities](#)

Networking:

- [Lincoln Medical Society](#)

Newsletters:

- [Sessional GPs e-newsletter](#)
- [GP Weekly Bulletin \(England\)](#)
- [GP Trainee Newsletter](#)
- [Practice Manager Association News](#)

Buying Group:

- [Latest LMC Buying Group Update](#)



 @KateLincsLMC

 @LincolnshireLMC

 @KieranLincsLMC

  @LincolnshireLMC

[Back to contents page](#)

LMC Newsletter - Page 7



VACANCIES IN LINCOLNSHIRE GENERAL PRACTICE

To view each listing please click on the vacancy titles.

[Clinical Pharmacist, The Glebe Practice, Saxilby.](#)
Contact - smaddison@nhs.net - 01522 706901

[Clinical Practitioner, Beacon Medical Practice, Skegness](#)
Contact - nick.hutchinson@nhs.net

[Dispenser \(NVO 2\), Vale Medical Group, Lincolnshire](#)
Contact - julie.jaggard@GP-C82016.nhs.uk

[GP Partner, Market Cross Surgery, Corby, glen.](#)
Contact - louise.allen@nhs.net - 01476 550056

[GP Partner, Boultham Park Medical Practice, Lincoln](#)
Contact - damian.jackson@nhs.net - 01522 874444

[GP Salaried, Partner, Cliff Villages Medical Practice, Navenby.](#)
Contact - Allison.Cook@nhs.net - 01522 811411

[Hub Manager, Lakeside Stamford](#)
Contact - donnaefirstpracticemanagement.co.uk - 0333 240 4010

[Nurse Practitioner, Boultham Park Medical Practice, Lincoln.](#)
Contact - damian.jackson@nhs.net - 01522 874444

[Practice Manager, Littlebury Medical Centre, Holbeach.](#)
Contact - saleem.ajumal@nhs.net - 01406 422231

[Practice Nurse, St John's Medical Centre, Grantham.](#)
Contact - lauren.fern@nhs.net - 01476 858820

[Receptionist, Vale Medical Group, Lincolnshire.](#)
Contact - julie.jaggard@GP-C82016.nhs.uk

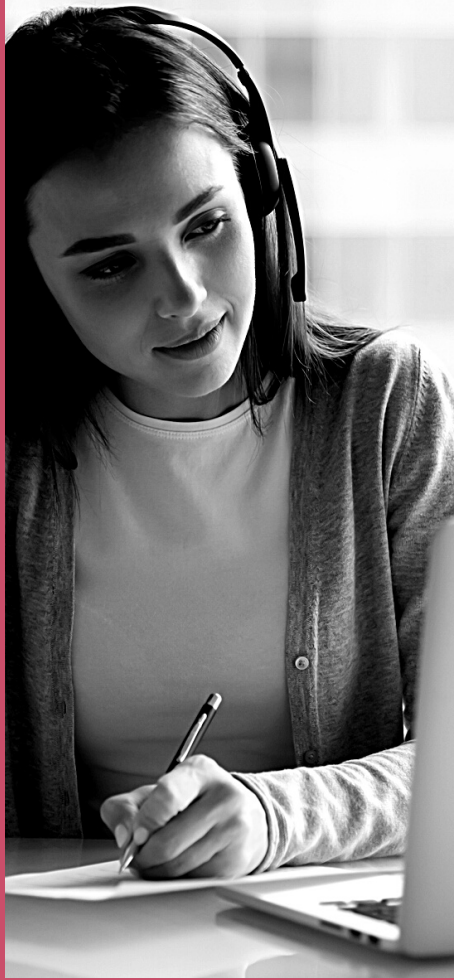
[Salaried GP, St Peter's Hill Surgery, Grantham.](#)
Contact - Catherine.dickinson@nhs.net - 01476850123

[Salaried GP, Vale Medical Group, Lincolnshire](#)
Contact - rachaelashworth@nhs.net - 01664 821920

[Salaried GP, Glenside Country Practice, Grantham.](#)
Contact - gillianstafford@nhs.net - 01476 552414

[Salaried GP with partnership, Brayford Medical Practice.](#)
Contact - tracey.baggott@nhs.net - 01255 543943

All vacancies can be found at: www.lincsllmc.co.uk/jobs



Lincolnshire LMC provides a wide range of training and events throughout the year for both clinical and non-clinical practice staff.

Examples of our upcoming events include:

- Thursday 1st July at 7pm: An evening with Consultant psychiatrists, Adaeze Bradshaw & Suneetha Siddabattuni – Managing eating disorders in young people and adults.
- Tuesday 6th July at 11am: CQC update for practices about future plans.
- Wednesday 14th July at 12pm: Population health DSA meeting for practices
- Wednesday and Thursday 14th and 15th July, 1:30–4:30pm: Appraisal skills workshop for managers and team leaders

If you are not able to find what you are looking for on our website, there are lots of free courses available for both clinical and non-clinical staff (including immunisation updates) at the [e-LfH website](#)

IMPACT
lincs
take-30
AND LET'S TALK



OUR SERVICES

IMPACT LINC

www.lincs-lmc.co.uk/impactlines

Mentoring & Coaching Service:

Mentoring & coaching can benefit you and your organisation in many ways.

Our trained mentors can support you to make positive steps forward in your career and personal life. Mentoring sessions can take place at a time & place to suit you.

Take-30

This service aimed at providing confidential peer support for busy GP's, Practice Managers, Nurses & all other Practice Staff Members as they work through everyday challenges.

This service is available free of charge for all Lincolnshire General Practice Staff between 10am & 4pm for initial contact, Monday to Friday.