



LINCOLNSHIRE LMC NEWSLETTER

BY LINCOLNSHIRE LMC SECRETARIAT

To look at our past newsletters please go to:
www.lincolnlmc.co.uk/newsletters

For more information on the articles published in
this newsletter, please contact:
info@lincolnlmc.co.uk

Follow us on
social Media:



LINCOLNSHIRE LMC NEWSLETTER

TABLE OF CONTENTS

[Next steps on infection
prevention and control • P. 2](#)

[CQC suite of clinical
searches • P. 3](#)

[GP pension scheme: new
CPI modeller • P. 4](#)

[National data sharing GP
Connect & Private Fees
calculator for BMA
members • P. 5](#)

[Fuller Stocktake • P. 6](#)

[Fit Note Certification • P. 7](#)

[GPAS Update • P. 8](#)

[Population Health
Management &
Lincolnshire Appointments
Infographic • P. 9](#)

[Lincs GP Society & Useful
Links • P. 10](#)

[Vacancies • P. 11](#)

[Practice Management
Support Network &
Take-30 • P. 12](#)

NEXT STEPS ON INFECTION PREVENTION AND CONTROL (IPC)



UKHSA has updated its UK IPC guidance with new COVID-19 pathogen-specific advice for health and care professionals.

This advice should be read alongside the National Infection Prevention and Control Manual (NIPCM) for England and applies to all NHS settings or settings where NHS services are delivered.

In summary.

Health and care staff should continue to wear facemasks as part of personal protective equipment required for transmission-based precautions when caring for suspected/confirmed COVID-19 patients or during an outbreak, and/or if new SARS-CoV-2 VOC emerge.

Universal masking should also be considered in settings where patients are at high risk of infection due to immunosuppression eg oncology/haematology.

Health and care staff are in general NOT required to wear facemasks in non-clinical areas e.g. offices, social settings, unless this is THEIR personal preference or there are specific issues raised by a risk assessment.

Patients with respiratory symptoms who are required to attend should wear a facemask/covering, if tolerated, or offered one on arrival. All other patients are not required to wear a facemask unless this is a personal preference.

Full article: [Next steps on infection prevention and control \(IPC\)](https://lincolnshirelmc.co.uk/next-steps-on-infection-prevention-and-control-ipc/) (lincolnshirelmc.co.uk)



Article by Nick Turner,
Practice Support Officer,
Lincolnshire LMC.

Ardens Health Informatics Ltd have now released the suite of clinical searches for Practices and CQC inspection teams.

Please see the following link for the full article which describes the steps Practices need to take to gain access to them.

The searches are now routinely used when carrying out inspections of GP practices and are designed to focus on areas of clinical importance, reflecting the profession's agreed shared view of quality and to contribute to a consistent regulatory approach. The majority of the searches focus on safe prescribing, monitoring of higher risk drugs and identification of potential missed diagnoses. They identify cohorts of patients who may require further attention.

CQC are working with Ardens as part of a 12-month pilot to create, review and deliver the searches on EMIS Web and SystemOne for GP practices. Cegedim Healthcare will be making the searches available for Vision GP practices. The searches are available free of charge for all GP practices.

For further information, please see GP Mythbuster 12: Accessing medical records during inspections.



Article by Nick Turner, Practice Support Officer, Lincolnshire LMC.



The recent soaring rate of inflation will have significant tax implications for some GPs' pensions.

This applies to those who are active members of the scheme contributing at any point of the current 2022/23 tax year, as you could have very large Annual Allowance charges, when such charges become due, depending on your accounting / pensions administration.

The BMA Pensions Committee have launched a new [CPI modeller](#) for the GP pension scheme for GPs to look at their pension growth in 2022/23 and 2023/24 tax years, and to explain the problems with poor design of the Annual Allowance and how it will interact with the 1995 / 2015 GP pension scheme, and Annual Allowance taxation.

It is important that you urgently take steps to at least understand your position and the potential impact this may have on future Annual Allowance charges. Entering your own data and numbers in the tool will only take a few minutes and will enable you to see how this might affect you personally – for many members they may need to estimate the value of their current pension based on their most recently available pension savings statements, subsequent contribution history and pensionable earnings.



Article by Reid Baker, Medical Director, Lincolnshire LMC.

The BMA Pensions Committee continue to lobby Government on this significant issue and encourage GP's to raise this with their local MPs, and help increase awareness with fellow GPs.

NATIONAL DATA SHARING GP CONNECT AND SUMMARY CARE RECORD

The temporary changes made to GP Connect and Summary Care Record Additional Information in response to the COVID-19 pandemic will continue in place beyond the end of the Control of Patient Information (COP) Notice.

You can be assured that you have the legal basis to continue to provide and use these vital services, under the UK General Data Protection Regulation (UK GDPR) and the Common Law Duty of Confidentiality.

The changes made to both services have shown benefits, including improved patient safety.

See full article here:

www.linclmc.co.uk/nationaldatasharing



PRIVATE FEES CALCULATOR FOR BMA MEMBERS

The BMA has recently launched a Fees calculator and feedback has been extremely positive. Many doctors told us that they rarely reviewed their fees, some looked to their peers to gauge what to charge, and others used guidelines that were years out of date.

In addition, Doctors have undercharged for private and non-NHS fee-based work for years, effectively subsidising the system and taking the hit on their take-home pay.

The Fees calculator helps doctors decide how much to charge for their services based on their own circumstances. Find out more here



Articles by Nick Turner, Practice Support Officer, Lincolnshire LMC.



Article by Reid Baker, Medical Director, Lincolnshire LMC.

NHSE/I recently published the 'Fuller Stocktake report' on the next steps for integrating primary care in England.

General practice's strength and value lies in its ability to provide good quality care from within communities, offering continuity and reassurance for patients. This report and the accompanying King's Fund analysis recognise and champion the invaluable part that practices play in the health of their local areas, and why it is so vital that general practice is given a leading role in service redesign.

The report recognises that the significant issues we face around workforce and estates must be addressed to allow us to thrive and effectively support our patients. Separation of urgent demand from more chronic or complex workload to allow more continuity for the vulnerable patients in our communities is suggested. Working collaboratively in neighbourhood teams is discussed as a solution to address the overall health of our population.

Our knowledge of our communities is recognised as the report advises that systems should allow services to be designed to local need based on this expert knowledge.

There is no specific detail as to how it may be implemented or funded and it does not specifically reference the independent contractor model as being a core element of the future.

The report is not a new contract, but an indication of the direction of travel for the future in General Practice and the wider system.

Read the full [BMA statement here](#)



FIT NOTE CERTIFICATION

From 1 July 2022, legislation is changing which will allow more healthcare professionals to certify fit notes to patients.

Currently only doctors can legally certify fit notes. DWP are now changing the legislation which will allow a further four professions to do this. These professions are nurses, occupational therapists, physiotherapists, and pharmacists.

Not everybody working within these professions should issue fit notes. Professionals should be working in a suitable environment and have the necessary skills and training to have work and health conversations with patients. This task needs to be within their professional 'scope of practice', therefore new guidance and training has been developed which will help professionals to identify if this task is suitable for them.

This legislation change applies across England, Scotland, and Wales.

This change follows legislation changes in April which removed the need for fit notes to be signed in ink. This change made it possible for doctors to certify fit notes digitally and also for patients to receive their fit note via digital channels (where GP IT systems support this).

For more information, please see the following [press release](#).



Article by Nick Turner, Practice Support Officer, Lincolnshire LMC.

GPAS UPDATE

General Practice Alert State – please continue to submit your data.

It is crucial to demonstrate the huge demand practices face that we know exists so that we can use it to evidence the need for there to be system response to support General Practice.

If you are not receiving the weekly email, or would like to nominate someone at the Practice to do this important role, please contact the LMC on 01522 576659 or email us at: info@lincslmc.co.uk

Since GPAS went live in May, following the successful pilot in April with 10 Practices. Since then, we have received on average 43% of Practices submitting their data, thank you. To date, we have 8 weeks of continual data which is starting to build a good picture. However, we need data from as many Practices as possible and it needs to be maintained into the future to provide comparisons for future capacity planning.

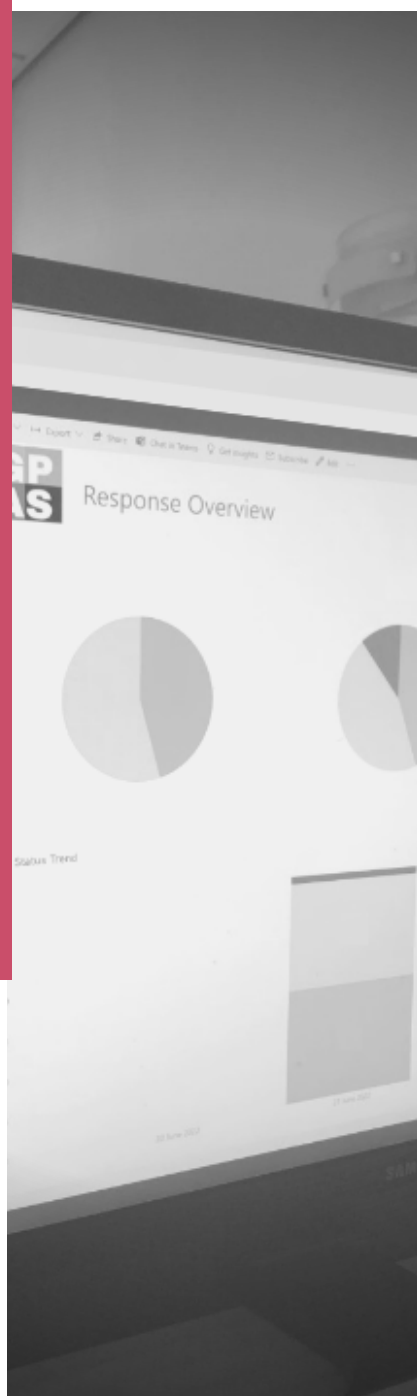
Practices can be reassured that the data they send to the LMC, including free text comments, Practice Alert Status (**GREEN**, **AMBER**, **RED** and **BLACK**) their locality / PCN and approximate list size are kept strictly confidential and are **NOT** available outside of the LMC.

When the data is received, it is collated by the LMC before summarising and sending onwards to key stakeholders in the CCG (soon to be ICS) as a situation report (sitrep).

This sitrep summarises data shown at a County and Locality levels and includes:

- Week No.
- GPAS state.
- Return rates.
- Clinical activity per 1000 patients
- Indicative number of patient contacts in General Practice for that week.

More information about GPAS can be found here: www.lincslmc.co.uk/generalpracticealertstategpas



Article by Reid Baker, Medical Director, Lincolnshire LMC.




POPULATION HEALTH MANAGEMENT WEBINAR

To find out more about the Population Health Management Programme in Lincolnshire [BOOK HERE](#)



Appointments in Lincolnshire General Practice May 2022



69% were face-to-face appointments:

274K

In February 2022
Lincolnshire's GP surgeries
completed:

399K
appointments

48% of appointments were
offered within 24 hours

193K

Thursday 14th May 2022 | Evening Event | 19:00 - 21:30

lincolnshire *lmc*
supporting lincolnshire's general practices to provide great care

Lincolnshire
GP
Society

*We will be
welcoming guest
speaker, Pip
Williams, Lead M&O,
and we will be
focussing on the role
of the Medical
Examiner*

Venue: The Agra, Sleaford.

USEFUL LINKS



Training resources:

- [Lincolnshire Training Hub](#)
- [E-Learning for Health \(e-LfH\) Programmes](#)
- [NB Medical Education](#)
- [GP Forum CPD Opportunities](#)

Resources:

- [We are with you](#)

Networking:

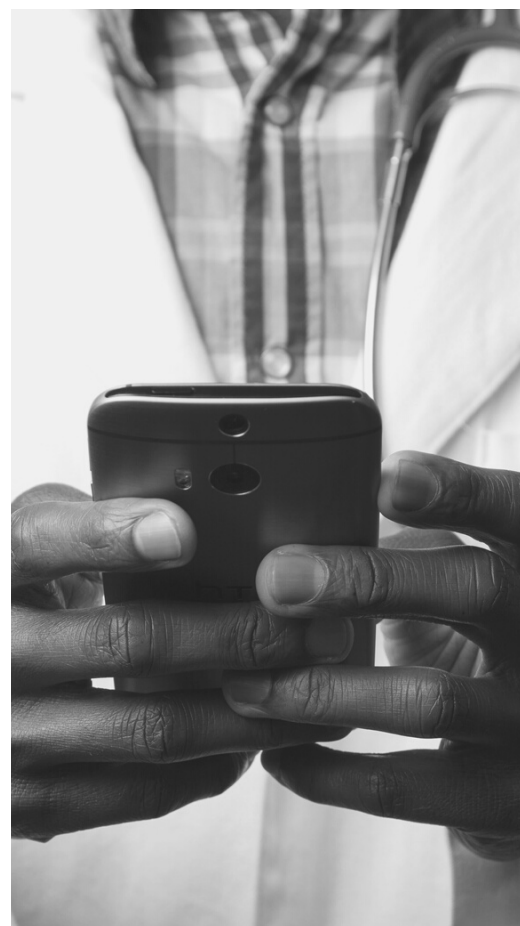
- [Lincoln Medical Society](#)

Newsletters:

- [Sessional GPs e-newsletter](#)
- [GP Weekly Bulletin \(England\)](#)
- [GP Trainee Newsletter](#)
- [Practice Manager Association News](#)

Buying Group:

- [Latest LMC Buying Group Update](#)



VACANCIES IN LINCOLNSHIRE GENERAL PRACTICE



To view each listing please click on the vacancy titles.

[Advanced Physiotherapist Practitioner – The Deepings Practice](#)

[Practice Manager – Birchwood Medical Practice](#)

[Practice Nurse – Market Cross Surgery](#)

[Salaried GP – Billingham Medical Practice](#)

[Salaried GP – St John's Medical Centre](#)

[Treatment Room Practice Nurse – The Welby Practice](#)

If you would like your job listing advertised on our website, please send the advert to laura.dexter1@nhs.net.

Your advert should only be one A4 page and should include:

- Job title
- Location
- Practice logo or image
- Short overview of the role or the practice.
- Salary and any benefits
- Contact information & link to your practice's website
- Closing date of job listing

Your advert should preferably be sent to us as a PDF format.

Alternatively you can your job listing here: [Create Listing](#)

Note this will have to be approved by a Lincolnshire LMC administrator

All vacancies on the Lincolnshire LMC website can be found at: www.lincsllmc.co.uk/jobs

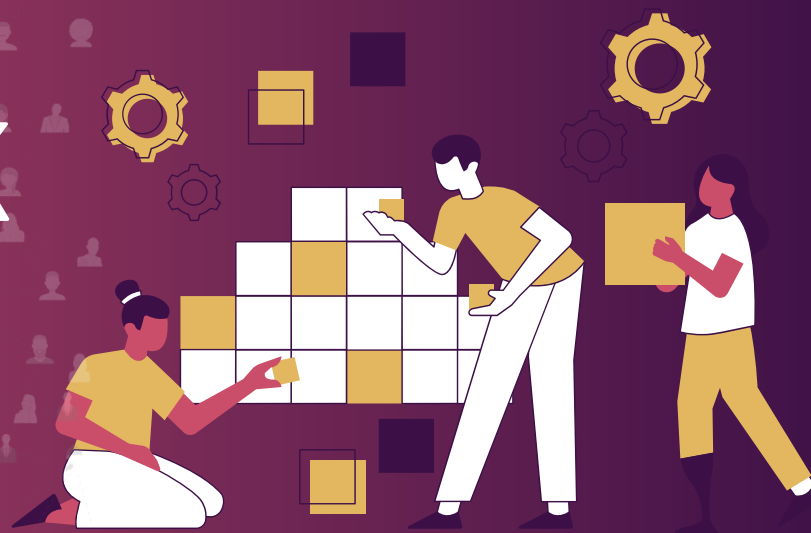
NEXT MEETING: 27TH JULY 2022

Organised by Nick Turner,
Practice Support Officer

PRACTICE MANAGEMENT SUPPORT NETWORK

BOOK HERE

lincolnshire *lmc*
supporting lincolnshire's general practices to provide *great care*



TAKE-30 SERVICE

Feeling Frazzled?



www.lincslmc.co.uk/wellbeing

Our Take-30 phone support service is available for all Lincolnshire practice staff between 10am and 4pm, weekdays.

This is a great opportunity to talk through daily challenges with someone that understands what it is like working in a practice.

Don't bottle things up, offload! Take-30 and let's talk things through in a safe, supportive environment.

take-30
AND LET'S TALK



info@lincslmc.co.uk



01522 576659

IMPACT
lincs