



LINCOLNSHIRE LMC NEWSLETTER

BY LINCOLNSHIRE LMC SECRETARIAT

To look at our past newsletters please go to:
www.lincolnlmc.co.uk/newsletters

For more information on the articles published in
this newsletter, please contact:
info@lincolnlmc.co.uk

Follow us on
social Media:



LINCOLNSHIRE LMC NEWSLETTER

TABLE OF CONTENTS

[National Standards of
Healthcare Cleanliness • P. 2](#)

[QOF Point value and
Prevalence • P. 3](#)

[Election process for the
GPCE Officer Team • P. 4](#)

[Update on healthcare
professionals certifying fit
notes • P. 5](#)

[Patient record access -
Test patient and staff
webinars • P. 6](#)

[Digital Firearms Marker
Resources • P. 7](#)

[Enhanced Access Webinar &
The Cameron fund video • P. 8](#)

[Lincolnshire General Practice
Covid-19 Recognition &
Reflection • P. 9](#)

[Population Health
Management Webinar &
Useful Links • P. 10](#)

[Vacancies • P. 11](#)

[Practice Management
Support Network &
Take-30 • P. 12](#)

NATIONAL STANDARDS OF HEALTHCARE CLEANLINESS 2021



The CQC have been asked if the National Standards of Healthcare Cleanliness 2021 guidance is mandatory for General Practice.

They made it clear that they will continue to regulate based on the actual regulations and the official code of practice which states:

All providers of healthcare and adult social care should meet or exceed the Code of Practice on the prevention and control of infections and related guidance.

National Standards of Healthcare Cleanliness 2021 replace the 2007 specifications for NHS cleanliness. This guidance mirrors expectations for GP providers which are already covered by our regulations and the code of practice. For example, IPC audit processes, waste management, cleaning schedules and maintenance of equipment.

There are no expectations that we require star ratings or logos to be displayed in General Practices.

The CQC Infection Control Mythbuster contains the full details.

Our full article can be found here:
www.lincslmc.co.uk/nationalstandardsofhealthcarecleanliness2021



Article by Nick Turner,
Practice Support Officer, Lincolnshire LMC.

QOF POINT VALUE AND PREVALENCE

This article explains how QOF is calculated using your practice prevalence data from [NHS Digital's online database](https://www.nhs.uk/digital) or www.gpcontract.co.uk.

Note: no one has access to the current financial year prevalence data as it is not extracted until 31st March each year, therefore the calculation examples below will only be an approximate based on the previous financial year's national prevalence data.

QOF income in any financial year is calculated using 3 variables:

- **QOF points achieved** – The value of a QOF point for 2022/23 is £207.56
- **Contractor Population Index (CPI)** – this is your practice list size divided by the "national average list-size", which changes annually (for 2022/23 it is 9,374 patients).

For example if your list size is 16,000 patients then your CPI is $16,000 / 9,374 = 1.71$.

- **Adjusted Practice Disease Factor (APDF)** – this is your practice disease prevalence for a particular chronic disease divided by the national average disease prevalence.

For example the national average prevalence of AF for 2022/23 is 2.1%. If your practice prevalence is 3.05% then your APDF for AF will be $3.05/2.1 = 1.45$.

The full article is available on the Arden's [website](https://www.arden.ac.uk) and contains additional information and the location of 'case finder' searches that can help increase the Practice's prevalence.



Article by Nick Turner, Practice Support Officer, Lincolnshire LMC.

ELECTION PROCESS FOR THE GPCE (GP COMMITTEE ENGLAND) OFFICER TEAM

Following a recent decision at GPC England, the GPCE Executive Team (made up of a chair, a deputy and two executive team members) has become the GPC England Officer Team (made up of a chair and three deputies). This brings the leadership structure of GPC England further in line with what is standard practice at the BMA and ensures parity of esteem between the Officer Team. It will not impact the function of the Team.

There is a vacant position on the GPC England Officer Team. Following a recent decision at GPC England, this position shall be elected to ensure democratic accountability.

All GPs in England who are members of the BMA are eligible to stand. The electorate are the voting members of GPC England.

Nominations are now open for this position and candidates should submit their nomination online via the BMA elections portal, accessible [here](#).

To nominate themselves, candidates should submit a 500 word candidate statement.

There will also be a virtual hustings on Tuesday 9 August which all candidates and the voting members of GPC England will be invited to attend. Candidates will be able to give a 5-minute speech during this hustings.

Candidates may nominate themselves at elections.bma.org.uk. Nominations will remain open until 12pm Monday 8 August.

Election timetable

Nominations open – 12pm Friday 22 July 2022, Nominations close – 12pm Monday 8 August 2022

Virtual hustings – 12pm – 1pm Tuesday 9 August 2022

Voting open – 12pm Wednesday 10 August 2022, Voting close – 12pm Wednesday 17 August 2022

Term of office

Deputy Chairs shall be elected, each for a term of three sessions or until a new committee chair is elected or re-elected (whichever is sooner) and shall be eligible for re-election on the same basis thereafter.

For the role, a minimum of 2.5 days per week time commitment will be required. Details of remuneration and other terms and conditions associated with the role can be provided upon request by emailing info.gpc@bma.org.uk.



If you have any questions regarding the elections process, please contact elections@bma.org.uk.

If you would you like to find out more about the role, please contact the GPC secretariat at info.gpc@bma.org.uk.

Article by Kate Pilton, Chief
Operating Officer, Lincolnshire LMC.

UPDATE ON HEALTHCARE PROFESSIONALS CERTIFYING FIT NOTES



Further to the legislation change on 1 July 2022 which allowed more healthcare professionals to certify fit notes to patients, guidance and training is now available to support the new rules.

This guidance has been developed to provide advice to doctors, nurses, occupational therapists, pharmacists, physiotherapists and their employers about certifying fit notes. The guidance is designed to provide a summary of the knowledge, skills, experience and training these healthcare professionals (HCPs) are expected to have before certifying fit notes.

It includes broad principles applicable across all those involved in certifying fit notes, with chapters covering:

- Eligible HCPs – the experience and competence required for individuals to certify fit notes;
- Employer – the responsibilities and duties of those employing HCPs enabled to certify fit notes; and
- Governance – the relevant governance considerations including professional regulation and codes of practice.

It is important that individuals and employers consider the above resources, alongside this guidance, to understand:

- who should undertake fit note certification;
- how to practically certify a fit note;
- what fit note certification entails.

Healthcare professionals eligible to certify fit notes should complete the e-learning training programme which is freely accessible [here](#).

Read our full article:

www.lincslmc.co.uk/certifyingfitnotesupdate



Article by Nick Turner, Practice Support Officer, Lincolnshire LMC.

SETTING UP A TEST PATIENT FOR THE NHS APP

Patient record access is to be switched on for all patients from November 2022.

In advance of this, it is a good time to find out what your patients can see in the NHS App and how to prepare (see here for details).

To do this, you should set up a test patient so that you can check how your system appears to patients in the NHS App. Your test patient needs to be aged 16 or over, and have an NHS number and account in your clinical system, with patient online services activated.

The NHS number needs to be present on the central NHS system Spine, therefore, you may have to contact nhsapp@nhs.net to request one.

The app works by connecting a patient to their GP record in your clinical system, so you need to set up a test patient in both the clinical system and the NHS App.

More details about getting patients started with NHS login can be found [here](#).

WEBINARS FOR STAFF IN ADVANCE OF PATIENT RECORD ACCESS

From November 2022, patients with online accounts such as through the NHS App will be able to read new entries in their health record.

This applies to patients whose practices use the TPP and EMIS systems. (Arrangements with practices which use Vision as the clinical system are under discussion).

It means GPs and practice staff will need to consider the impact of each entry, including documents and test results, as they add them to a patient's record.

Note: Patients will not see personal information – such as positive test results – until they have been checked and filed, giving GPs the chance to contact and speak to patients first.

NHS England are hosting various webinars in the coming months. Find out more from our guidance pages here: www.lincslmc.co.uk/patientrecordaccesswebinars



Article by Nick Turner,
Practice Support Officer,
Lincolnshire LMC.

TPP – SystmOne have introduced a digital firearms marker from 6 July 2022.

Note for EMIS Practices:

There will be a temporary pause on the digital firearms marker for practices using the EMIS system, effective from the evening of 14 July 2022. The digital marker system on EMIS should be back up and running after a few weeks, and after it has been cleared through the JGPITC (Joint General Practitioners Information Technology Committee). This temporary pause is to address some issues that have been communicated by GPs and practices, and to enable testing of the accuracy and completeness of the flags that are currently popping up.

Background

Prior to the introduction of the digital firearms marker, while the police would request that a firearms marker was placed on the patient record, this was done manually by GPs and using different methods across GP practices. **Note:** This system should be used to in conjunction with Practices exiting systems for managing firearms licenses.

TPP have produced a user guide which is available in SystmOne under Help > Support & FAQs > Documents & Training Guides > Firearms Marker user guide. The following is an extract of that guide.

Process

When an applicant takes the Medical Information Proforma to their Practice to be completed, the clinician or someone acting on their behalf should add a 'Has applied for firearm certificate' code (SNOMED: 1366291000000101) to the applicant's record.

This will automatically trigger a Protocol in SystmOne that informs the Practice that the patient's usual clinician, or someone acting on their behalf, should clinically assess the patient's suitability for a firearms certificate.

For more information and to view attachments relate to this article, please go to:

www.lincslmc.co.uk/digitalfirearmsmarkerresources

ENHANCED ACCESS WEBINAR (04/08/22)

This Enhanced Access Webinar is open to everyone in primary care, especially those who are working to finalise their draft Enhanced Access plans to give to their commissioners.

To register, please [follow this link](#)

The webinar, in association with Hempsons, will guide PCNs through how to sub-contract the Enhanced Access service to another provider.

Speakers:

Ross Clark, Partner, Hempsons; Simone Yule, Clinical Director, The Vale PCN

Please note this session will take place on Zoom.

THE CAMERON FUND WEBINAR

The Cameron Fund have created a video explaining how to become a member and show your support for the Cameron Fund and help colleagues who are experiencing hardship

You can view the video here: [CF Video 9 Membership - YouTube](#)



LINCOLNSHIRE GENERAL PRACTICE COVID-19 RECOGNITION & REFLECTION

The workload of our already overstretched general practice almost doubled during the pandemic and there are no signs of it reverting back. We felt it was crucial for all Lincolnshire's practice staff be recognised for their hard work and dedication throughout the pandemic and continuing challenges.

We were delighted to bring Lincolnshire practice teams together for a special event to reflect on recent years, recognise everyone's efforts, and celebrate accomplishments. We hope that all attendees had a wonderful time and were able to share the sentiment with colleagues who were unable to attend.

We would like to say a huge thank you to [Duncan & Toplis](#) for their significant contribution to make this event such a special occasion.... To read the full article [CLICK HERE](#).



POPULATION HEALTH MANAGEMENT WEBINAR

This webinar covers the end-to-end data sharing and management processes that are key to supporting you to utilise population health management approaches for your local community.



BOOK NOW!

USEFUL LINKS



Training resources:

- [Lincolnshire Training Hub](#)
- [E-Learning for Health \(e-LfH\) Programmes](#)
- [NB Medical Education](#)
- [GP Forum CPD Opportunities](#)

Resources:

- [We are with you](#)

Networking:

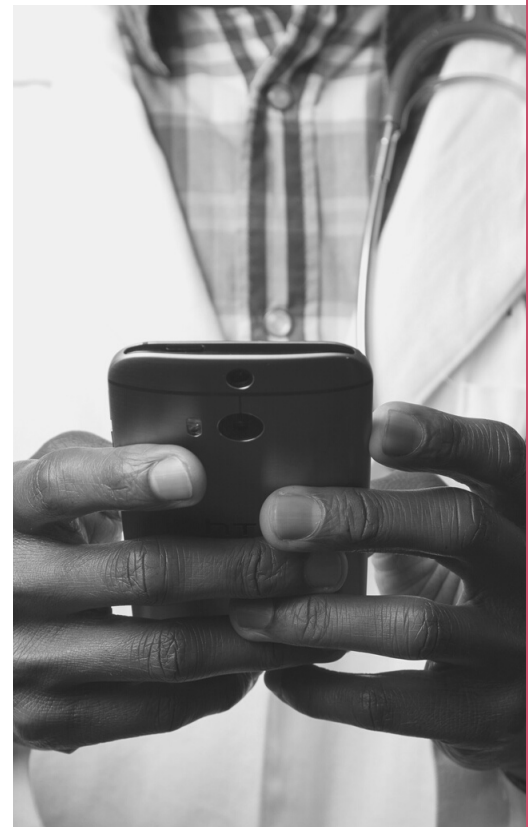
- [Lincoln Medical Society](#)

Newsletters:

- [Sessional GPs e-newsletter](#)
- [GP Weekly Bulletin \(England\)](#)
- [GP Trainee Newsletter](#)
- [Practice Manager Association News](#)

Buying Group:

- [Latest LMC Buying Group Update](#)



VACANCIES IN LINCOLNSHIRE GENERAL PRACTICE

To view each listing please click on the vacancy titles.

[Adv. Clinical Practitioner – Harrowby Lane Surgery](#)

[Health Care Assistant – New Coningsby Surgery](#)

[Part-time Dispenser – The Welby Practice](#)

[Qualified Dispenser – The New Springwells Practice](#)

[Salaried GP – The New Springwells Practice](#)

[Salaried GP – Heart of Lincoln Medical Group](#)

[Salaried GP – Billingham Medical Practice](#)

If you would like your job listing advertised on our website, please send the advert to laura.dexter1@nhs.net.

Your advert should only be one A4 page and should include:

- Job title
- Location
- Practice logo or image
- Short overview of the role or the practice.
- Salary and any benefits
- Contact information & link to your practice's website
- Closing date of job listing

Your advert should preferably be sent to us as a PDF format.

Alternatively you can your job listing here: [Create Listing](#)

Note this will have to be approved by a Lincolnshire LMC administrator

All vacancies on the Lincolnshire LMC website can be found at: www.lincsImc.co.uk/jobs

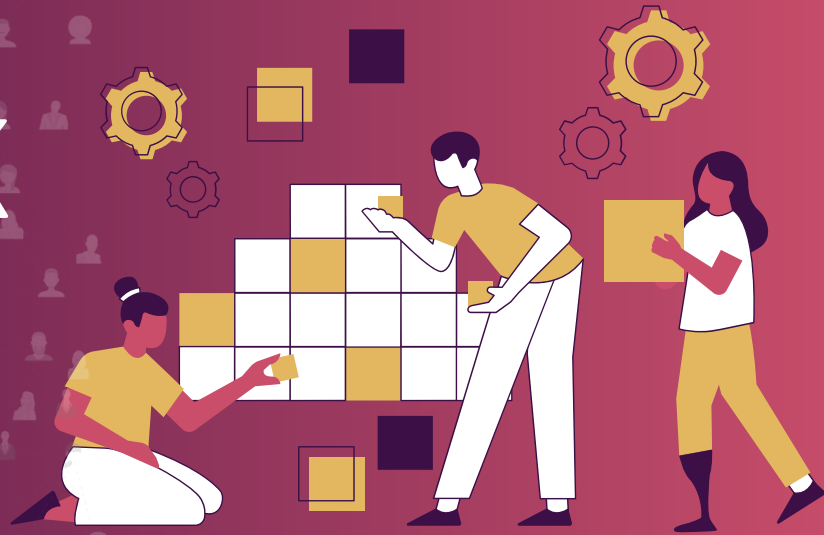
NEXT MEETING: 24TH AUGUST 2022

Organised by Nick Turner,
Practice Support Officer

PRACTICE MANAGEMENT SUPPORT NETWORK

[BOOK HERE](#)

lincolnshire *lmc*
supporting lincolnshire's general practices to provide great care



TAKE-30 SERVICE

Feeling Frazzled?



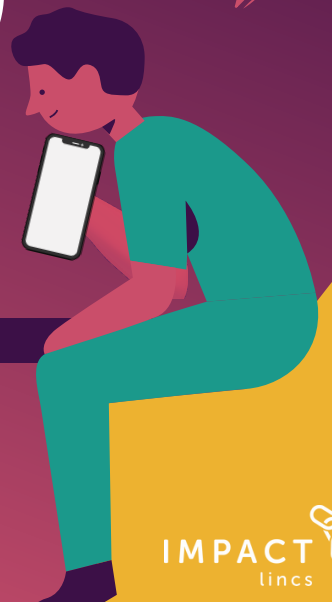
www.lincslmc.co.uk/wellbeing

Our Take-30 phone support service is available for all Lincolnshire practice staff between 10am and 4pm, weekdays.

This is a great opportunity to talk through daily challenges with someone that understands what it is like working in a practice.

Don't bottle things up, offload! Take-30 and let's talk things through in a safe, supportive environment.

take-30
AND LET'S TALK



info@lincslmc.co.uk



01522 576659

IMPACT
lincs