



"Supporting
Lincolnshire's general
practices to provide
great care"

PRACTICE IN TOUCH

SEPTEMBER NEWSLETTER

ISSUE 25 • SEPTEMBER 2021



LINCOLNSHIRE LMC NEWSLETTER

BY LINCOLNSHIRE LMC SECRETARIAT

Welcome to our monthly newsletter.

To look at our past newsletters please go to:
www.lincslmc.co.uk/newsletters

For more information on the articles published in
this newsletter, please contact:
info@lincslmc.co.uk

To keep up to date with the latest LMC
information follow us on social media:
[@LincolnshireLMC](https://twitter.com/LincolnshireLMC)

LINCOLNSHIRE LMC NEWSLETTER

TABLE OF CONTENTS

PCN What is expected
from OCT 21? • P. 2

Blood Bottle Shortage &
GPAS Coming soon! • P. 3

CCG Consultation four
NHS Lincolnshire Services
& EPaCCS Webinar • P. 4

Dealing with abuse of
practice staff on social
media & Pension
Deductions by PCSE • P. 5

National Protocol for flu
vaccination & IoS for giving
flu vaccination to staff • P. 6

Pharmacy Contract
Changes & #Support your
surgery campaign • P. 7

Autism Information Hub &
The Active Bystander
Training • P. 8

Plant a tree & Mid-career GP
Workshop • P. 9

Follow us on Social Media
& Useful Links • P. 10

Vacancies • P. 11

LMC Development Centre
& Our services • P. 12



PRIMARY CARE NETWORKS (PCN) – WHAT IS EXPECTED FROM OCTOBER 2021?

BY KIERAN SHARROCK

NHSEI have published their expectation for PCNs for 2021/22 and 2022/23. Full details of this can be found at the NHSEI web pages. This article aims to summarise these for practices so that you know what will be expected from October 2021 onwards. LMC plan to run a webinar about this provisionally on 16th September 2021.

NHSEI have identified five priorities for PCNs going forward

- I. Improving prevention and tackling health inequalities in the delivery of primary care
- II. Supporting better patient outcomes in the community through proactive primary care
- III. Supporting improved patient access to primary care services
- IV. Delivering better outcomes for patients on medication
- V. Helping create a more sustainable NHS

To support these priorities NHSEI will invest £43m across England to fund PCN leadership and management development.

Extended access

From April 2022 PCNs will be asked to provide a single unified extended access service, reducing the requirement for practices to provide this individually. Full details are going to be published later in the autumn.

PCN Service Specifications

Extra services which PCNs will be required to deliver have been postponed to recognise the post-pandemic workload.

Our full article includes additional information as well as the plan for introducing services. This can be found at: [Lincolnshire LMC: Primary Care Networks \(PCN\) – what is expected from October 2021?](#)

BECTON-DICKINSON BLOOD BOTTLE SHORTAGE

BY KIERAN SHARROCK

Practices will have received notice that they can resume blood tests, however there is still a shortage of blood bottles. NHSEI have requested that practices continue to be cautious with their blood bottle usage.

Lincolnshire CCG has asked that practices inform them of any shortages by emailing the primary care inbox lccg.primarycarelincs@nhs.net. The CCG will then try to source more bottles and monitor stock levels.

To view our full article, please follow the link below:
[Lincolnshire LMC: Becton-Dickinson blood bottle shortage](#)



GENERAL PRACTICE ALERT SYSTEM- COMING SOON!

BY KIERAN SHARROCK

Hospital trusts use Operating Pressures Escalation Level (OPEL) to communicate their demand and capacity to the NHS systems. OPEL is used by the NHS system to identify where support is required in the short term, and where transformation is required in the long term.

General practice does not currently use an official OPEL system.

Lincolnshire LMC have been working with the CCG and other NHS bodies to develop an OPEL system which can accurately quantify the status of general practices. This system will be known as General Practice Alert System (GPAS).

Lincolnshire LMC will soon be asking GP practices across Lincolnshire to provide simple data about workforce capacity, workload demand, and practice list size on a weekly basis so that we can generate a GPAS report weekly.

We ask that you engage with this process as it will help articulate to our NHS the pressures which we are facing.

More information can be found at: [Lincolnshire LMC: General Practice Alert System- coming soon!](#)



CONSULTATION REGARDING FUTURE OF FOUR NHS LINCOLNSHIRE SERVICES

BY KIERAN SHARROCK

NHS Lincolnshire Clinical Commissioning Group (CCG) are consulting regarding future of four NHS services. It is important that general practices feedback their views about these proposed service changes.

The services being consulted on are:

- Orthopaedic surgery across Lincolnshire
- Urgent and emergency care at Grantham and District Hospital
- Acute medical beds at Grantham and District Hospital
- Stroke services across Lincolnshire

Full details about the public consultation, the service review process and proposals, and all the ways to get involved can be found on the Lincolnshire NHS website: <https://www.lincolnshire.nhs.uk>

For our full article: [Lincolnshire LMC: Consultation regarding future of four NHS Lincolnshire services](#)



PALLIATIVE CARE CO-ORDINATION SYSTEM (EPACCS) WEBINAR

BY KATE PILTON

The EPaCCS webinar on Tuesday 19th October will help practices to:

- Save time and improve efficiencies with the updated Gold Standards Framework (GSF) Meeting Tools.
- Streamline communication using the GSF Report and new EPaCCS
- Automate administration for your GSF/MDT Meetings
- Automate your Quality Outcomes Framework (QOF) After Death Audit.

Please go to our webpage to view the EPaCCS flyer for more details: [Lincolnshire LMC: EPaCCS Webinar](#)

DEALING WITH ABUSE OF PRACTICE STAFF ON SOCIAL MEDIA FROM PATIENTS

BY KATE PILTON

The GPC have developed guidance how to protect yourself from online abuse and the steps GP practices can take against patients who leave abusive comments on social media or websites. It outlines what to do first, how to report content to the provider and what criminal and civil actions are possible.

Please see link to the GPC Guidance: [Dealing with abuse of practice staff on social media from patients \(bma.org.uk\)](https://www.gpc.org.uk/guidance/Dealing-with-abuse-of-practice-staff-on-social-media-from-patients)



PENSION DEDUCTIONS BY PCSE

BY KATE PILTON

We are aware that around 2,000 practices did not have pension deductions taken for one or more GPs from June through August. PCSE inform us that the majority will have the deductions in total taken from payments to practices during this month's payment runs. The deductions will be taken from the first payment processed by PCSE during the month, be that global sum or any other payment.

For the full article, please go to: [Lincolnshire LMC: Pension deductions by PCSE](#)



NATIONAL PROTOCOL FOR INFLUENZA VACCINATION

BY KIERAN SHARROCK

Public Health England have published a **National Protocol for inactivated influenza vaccine** which sets out how flu vaccines can be administered by registered and un-registered health professionals.

Practices can use this protocol to enable un-registered staff to administer the flu vaccine without use of PSDs.

Un-registered staff require appropriate training and supervision, and the requirements are set out within the Protocol.



ITEM OF SERVICE (IOS) FOR GIVING FLU VACCINE TO PRACTICE STAFF

BY KIERAN SHARROCK

This year practices will receive an IoS fee for providing a flu vaccine to their own practice staff in patient-facing roles. The **Enhanced Service specification** has been updated to reflect this change.



PHARMACY CONTRACT CHANGES

BY KIERAN SHARROCK

There have been some recent changes to the pharmacy contract which will possibly impact GP practices.

PSNC has produced a helpful summary of the changes which can be found at [PSNC-Briefing-040.21-Briefing-for-general-practice-teams-on-CPCF-changes-2021-22.pdf](#)

Our full article regarding the Pharmacy contract changes can be found at: [Lincolnshire LMC: Pharmacy Contract Changes](#)



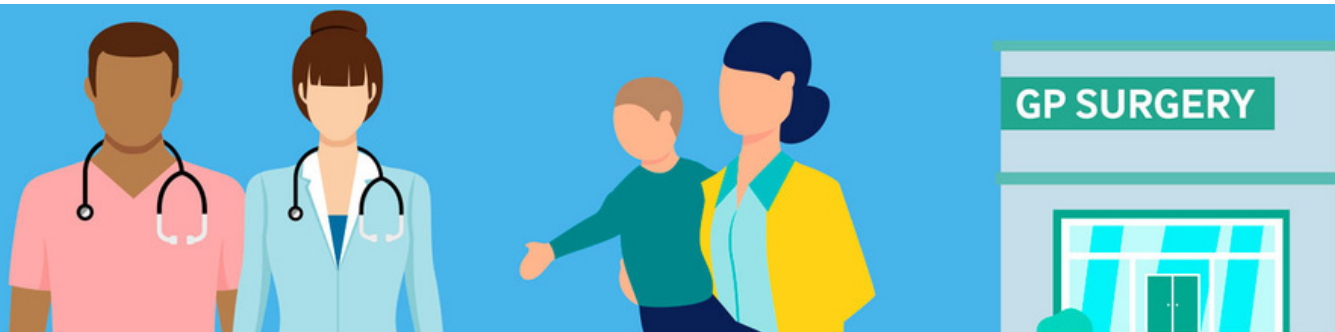
#SUPPORT YOUR SURGERY CAMPAIGN

BY KATE PILTON

At a time when so many are criticising general practice, we would encourage you to continue to use the resources and tools available on the Support Your Surgery campaign page to get the support of our patients to make the changes we urgently need to see.

This is one of the ways to address the concerns we share with our patients and to reduce the workload pressures we currently experience – and more than 10,000 people have now signed our petition – please show your support and sign it at: <https://www.bma.org.uk/supportyoursurgery>.

For our full article please go to: [Lincolnshire LMC: #Support Your Surgery campaign](#)



Your GP surgery needs your support, so it can be there to support you.

#SupportYourSurgery

AUTISM INFORMATION HUB

BY ROSA WYLDEMAN

The Lincolnshire Autism Partnership Board (LAPB) aims to improve support for autistic people. They are looking to develop an Autism Information Hub which will become the initial point of access for autistic people, their families and professionals when requiring information and advice regarding autism, services and support.

To aid that development they are looking to gain a better understanding of your requirements. Please help them by completing a short survey; which takes just a couple of minutes.

To take part, please click the following link to go to the online survey: <https://forms.gle/mu2HLxNxsgkQdUq47>

All responses are anonymous unless you chose to leave your contact details if you wish to input further.

For the full article please go to: [Lincolnshire LMC: Autism Information Hub](#)



THE ACTIVE BYSTANDER TRAINING

BY VON SHURO

"Reflections of a ~~black Christian woman GP~~ human being.

People matter; and at the core of our individual experiences is that desire to know we are seen, accepted for who we are and valued for our contribution. But in an increasingly diverse and precarious society riddled with identity politics, never has this been harder to achieve. Longstanding issues of harassment, bullying, discrimination, and racism have been exposing the widening cracks in our society as highlighted by the recent #MeToo, BLM movement and other notable cases."

This is an excerpt from an article written by Von Shuro, who had attended our active bystander training this month. Full article on our website:

www.linclmc.co.uk/activebystandertrainingreflections

To sign up to our next Active bystander training please go to: www.linclmc.co.uk/events/12420



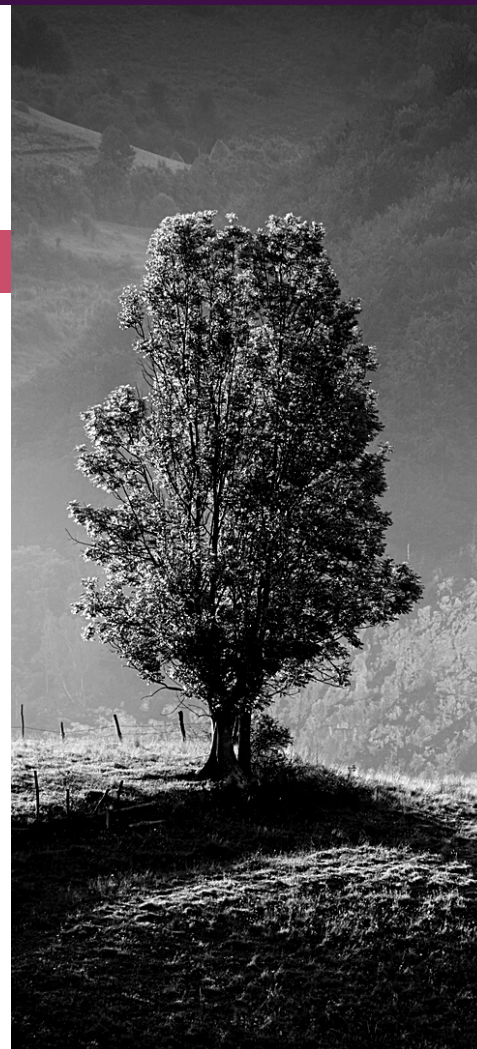
PLANT A TREE TO RECOGNISE AND REFLECT ON THE IMPACT OF THE PANDEMIC

BY KIERAN SHARROCK

The NHS in Lincolnshire would like to recognise and reflect on the impact of the pandemic on all health and social care staff. To do this, a project is being developed to offer all staff the opportunity to plant a tree or have a tree planted on their behalf. These trees are being sourced by the NHS in Lincolnshire. The trees are intended to be placed in a prominent position and will act as a sign of remembrance and resilience to patients and staff. This hugely exciting project is hoped to form the NHS Lincolnshire Orchard.

Details of how individuals will be able to source their tree will be made available at a later date. For now, practices are being asked whether they would like to plant a tree in their estate as part of this project.

Full article: [Lincolnshire LMC: Plant a tree to recognise and reflect on the impact of the pandemic](#)



MID-CAREER GP WORKSHOP: RE-CONNECT AND REFRESH

BY THE RCGP VALE OF TRENT FACULTY

Calling all mid career GPs!

Are you at a crossroads concerning your career?
Have you had time to reflect on where you are and where you would like to go?

The RCGP Vale of Trent faculty is hosting a mid careers coaching workshop with coach and mentor Alexis Hutson

When: Tuesday 12th October 18:00–20:00

Virtual via Zoom

Free to attend

Spaces are limited, book here!

[https://rcgpportal.force.com/s/lt-event?](https://rcgpportal.force.com/s/lt-event?id=a1U1i0000080N10EAE&site=a0d0Y00000AeOP6QAN)

[id=a1U1i0000080N10EAE&site=a0d0Y00000AeOP6QAN](https://rcgpportal.force.com/s/lt-event?id=a1U1i0000080N10EAE&site=a0d0Y00000AeOP6QAN)



FOLLOW US ON SOCIAL MEDIA

To ensure you keep up to date with the latest
information from the Lincolnshire LMC Follow us on:

@LincolnshireLMC



twitter



facebook



Instagram

USEFUL LINKS

Training resources:

- [Lincolnshire Training Hub](#)
- [E-Learning for Health \(e-LfH\) Programmes](#)
- [NB Medical Education](#)
- [GP Forum CPD Opportunities](#)

Resources:

- [We are with you](#)

Networking:

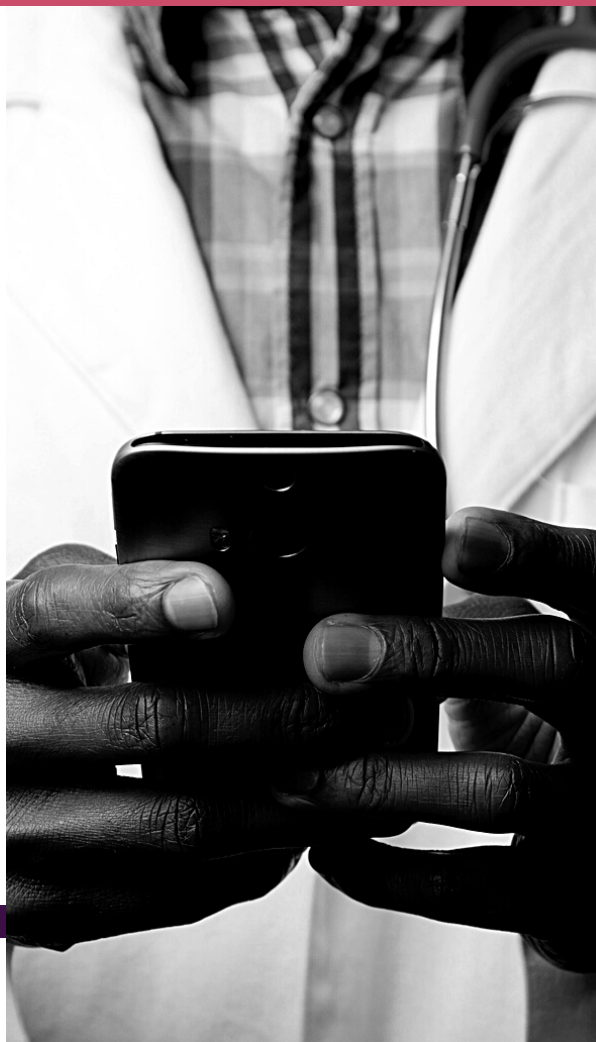
- [Lincoln Medical Society](#)

Newsletters:

- [Sessional GPs e-newsletter](#)
- [GP Weekly Bulletin \(England\)](#)
- [GP Trainee Newsletter](#)
- [Practice Manager Association News](#)
- [One You Lincolnshire newsletter](#)

Buying Group:

- [Latest LMC Buying Group Update](#)



VACANCIES IN LINCOLNSHIRE GENERAL PRACTICE

To view each listing please click on the vacancy titles.



[Admin / QOF Lead, Gosberton Medical Centre](#)

Contact - d.kowynia-kaczor@nhs.net - 01775 840204

[Medical Examiner \(4hrs per week\), ULHT](#)

Contact - Adam.Wolverson@ulh.nhs.uk - 07900958463

[Medical Examiner Officer, ULHT](#)

Contact - bernadine.gallen@ulh.nhs.uk - 07740780837

[Nurse Practitioner, Billingham Medical Practice](#)

Contact - rachel.eaton3@nhs.net - 01526 860490

[PT Dispensary Admin Support, The Deepings Practice](#)

Contact - rachel.eaton3@nhs.net - 01526 860490

[Part-Time Receptionist/Admin, The Deepings Practice](#)

Contact - kellie.goodley@nhs.net - 01778 579000

[Practice Nurse\(s\), The Deepings Practice](#)

Contact - kellie.goodley@nhs.net - 01778 579000

[Salaried GP, The Surgery Willingham-by-stow](#)

Contact - ian.hammerton@nhs.net

[Salaried GP with view to Partnership, Richmond Medical Centre](#)

Contact - S.Hardie4@nhs.net - 01522 708739

[Salaried GP, ACP, NP, Practice Nurse and HCA, Merton Lodge Surgery](#)

Contact - ianatkinson1@nhs.net - 01507 309094

[Senior Practice Nurse, New Springwells Practice](#)

Contact - jane.parry@nhs.net - 01529 240234

To advertise your job listing on our vacancies webpage and newsletter, please email laura.dexter1@nhs.net

We receive a high volume of job adverts, to ensure your listing stands out please include:

- Job Overview.
- Organisation Description
- Salary Information
- Contact details
- Images/Organisation Logo.
- Further attachments (if needed)

All vacancies can be found at: www.lincsImc.co.uk/jobs



The LMC Development Centre provides a wide range of training and events for all Lincolnshire general practice staff. A full list of available courses can be found on our website: www.lincslmc.co.uk/events

Upcoming events include:

- LMC Practice Manager Day with Prof. Jonathan Van-Tam – Thursday 7th October
- Active Bystander Training, be empowered to challenge inappropriate behaviour – Tuesday 19th October
- Lincolnshire LMC GP Conference, Managing the Unmanageable! – Thursday 25th November

Coming Soon:

- Training for practice receptionists and non-clinical staff
- Initial contraceptive training
- Initial travel health training
- Save the date – 15th July 2022 (evening): A very special occasion for all Lincolnshire general practice staff!

IMPACT
lincs
take-30
AND LET'S TALK



OUR SERVICES

www.lincslmc.co.uk/impactlincs

Mentoring & Coaching Service:

Mentoring & coaching can benefit you and your organisation in many ways.

Our trained mentors can support you to make positive steps forward in your career and personal life. Mentoring sessions can take place at a time & place to suit you.

Take-30

This service aimed at providing confidential peer support for busy GP's, Practice Managers, Nurses & all other Practice Staff Members as they work through everyday challenges.

This service is available free of charge for all Lincolnshire General Practice Staff between 10am & 4pm for initial contact, Monday to Friday.

To find out more about both of these services, contact us: Email: info@lincslmc.co.uk or call: 01522 576659