



## Lincolnshire LMC Weekly Update 16/02/2024

The Lincs LMC weekly update is an overview of our published information relevant to practices. All of our weekly updates can be found by clicking the button below.

[Click here for all previous Lincolnshire LMC Weekly Updates](#)

### Lincolnshire GP Society: SPECIAL MEETINGS – Primary/ Secondary Care Interface

**7th March | 14th March | 21st March**

Three special interface GP Society meetings. We welcome colleagues from a variety of primary and secondary care organisations to put faces to names and discuss interface challenges. The aim is to strengthen relationships and build communication networks in order to make day to day interface smoother.

Lincoln - 07/03/2024

Grantham - 14/03/2024

Boston - 21/03/2024



## Most recent News:

- [The New Cervical Screening Management System – check you can access prior to go-live](#)
- [General Practice Improvement Programme \(GPIP\)](#)
- [2022/23 End of Year Pensions process webinars – register for new dates](#)

All News



## Most recent Guidance:

- [What happens when you are referred by your GP to see a Consultant Privately?](#)
- [Performance matters: Self-prescribing](#)
- [Hints and Tips for Dispensing Contractors-January 2024](#)
- [Community Medical Examiner – Roll out April 2024](#)

All Guidance

## Information Event: Level 5 programme for new and aspiring managers in General Practice

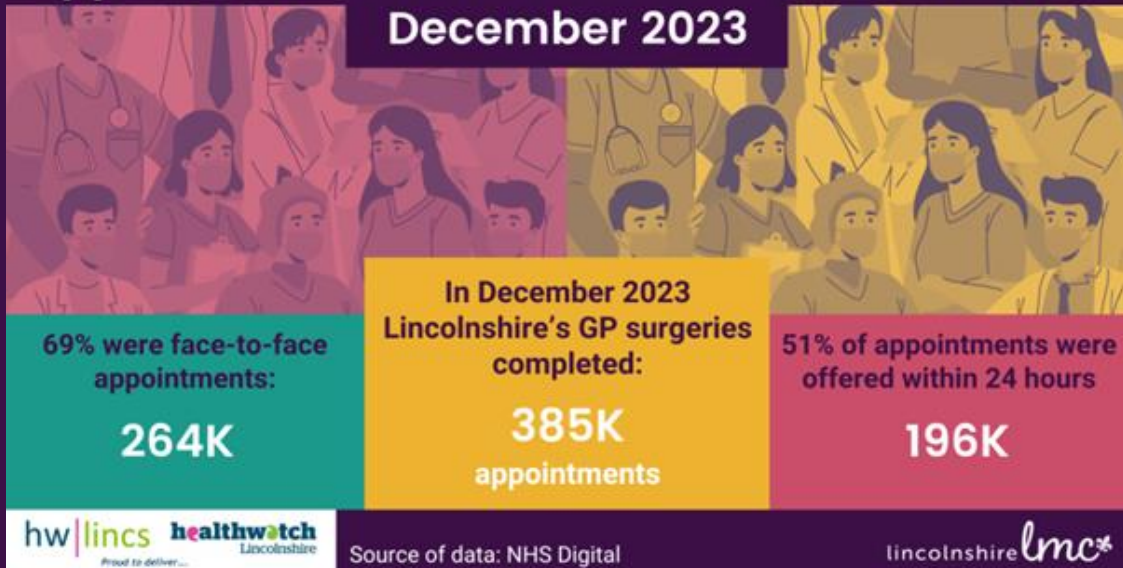
6th March | 13:00-14:00hrs | MS Teams  
Meet with representatives from Damar Training, the Institute of General Practice Management and Lincolnshire LMC to discuss the programme and hear about what is involved. There will also be time for Q&As.



Gain a **professional qualification** that will provide a foundation in practice management, led by the **IGPM Accreditation Framework.**

BOOK NOW!

# Appointments in Lincolnshire General Practice December 2023



## Lincolnshire General Practice Appointments Infographics:

<https://www.lincslmc.co.uk/infographics>

## Succession/retirement planning: What to do with your premises?

22nd February | 13:00-14:30 | MS Teams  
This webinar will explore the main premises options to consider when beginning GP practice succession and retirement planning; how to avoid common costly pitfalls and how a robust succession plan can even help alleviate partnership recruitment problems..



BOOK NOW!

## Receptionists in Primary Care

29th February 2024 | 12:00-13:30 | MS Teams  
During this session, learners will come to understand the need for protocol and etiquette when dealing with service users. The ABC of communication will be explained, along with the importance of listening and telephone skills. Challenging behaviour and



conflict resolution will also be discussed to give delegates the confidence they need to deal effectively with patients.

BOOK NOW!



Lincolnshire LMC, Commerce House, Outer Circle Road, Lincoln, Lincolnshire LN2 4WJ

[Manage preferences](#)