



LINCOLNSHIRE LMC NEWSLETTER

BY LINCOLNSHIRE LMC SECRETARIAT

To look at our past newsletters please go to:
www.lincslmc.co.uk/newsletters

For more information on the articles published
in this newsletter, please contact:
info@lincslmc.co.uk

Follow us on
social Media:



TABLE OF CONTENTS

BMA Press Statement • P2

Rebuild General Practice –
Patient Engagement Toolkit • P3

GP Contract Changes 2024/5
(GMS & QOF) • P4
Annual Flu Letter • P4
Very High-Risk Breast Screening • P4

LMC Buying Group • P5
Lincolnshire Appointment
Infographics • P5

Lincolnshire Vacancies • P6
Take-30 and let's talk! • P6

Lincolnshire PM Conference • P7
Your LMC Day • P7

CQRS – QOF 2023/24
VI001 Indicator Discrepancy • P8
Update on MMR vaccinations
for practice staff (CNSGP) • P8
GP Connect Issues • P8
Lincolnshire Dispensing
Practices Day • P8

LMC Development Centre:
Payments System Update &
What's on • P9

External Events • P10

Impact Lincs Mentoring • P11
Useful Links • P11

FEATURED ARTICLE: BMA PRESS STATEMENT

GPs across England have overwhelmingly voted to reject the announced Department of Health and Social Care and NHS England changes to the 2024/25 national GP General Medical Services (GMS) contract.

More than 19,000 GPs and GP registrars took part in the BMA's referendum, with 99.2% voting 'NO' to the question: **Do you accept the 2024/25 GMS Contract for General Practice from Government and NHS England?** (see full results below)

The contract changes, which will be imposed by the Government and NHS England from the 1st April 2024, include a national practice contract baseline funding uplift of just 1.9%, or £179m, for England's general practices, way below inflation in recent years, meaning many practices will struggle to stay financially viable over the next six to 12 months and risk closure.

The changes also include contractual incentives, which push practices further away from traditional GP-led care and access to GP and practice nurse appointments.

As planned, following confirmation of the results, the General Practitioners Committee (GPC) for England is meeting today (28th March 2024) to discuss the referendum outcome and the profession's next possible steps.

Some 2,400 GPs have joined the BMA since the beginning of February.

Dr Katie Bramall-Stainer, chair of GPC England at the BMA, said: "When I qualified as a GP in 2008, general practice was 'the jewel in the crown of the NHS'. Fast forward to 2024, we are witnessing a 'constructive dismissal' of general practice across England where £1.4bn of Treasury funds for practice staff are forbidden to be spent on recruiting more GPs and practice nurses. ([See full video here](#))

"This is despite almost 2,000 fewer GPs, more than 1,300 lost practices and six million more patients in the past decade. In fact, we now have hundreds of GPs unemployed – this is madness. The unanimity of the vote in our referendum demonstrates the depth of feeling among the profession. In 20 years, I've never known GPs to be so frustrated, angry and upset. We are unable to offer our patients the care they want and need.

Article continues overleaf...

Article written by Mr Nick Turner, Practice Support Officer, Lincolnshire LMC

FEATURED ARTICLE: BMA PRESS STATEMENT CONTINUED

“Today’s overwhelming result signals the start of our fight back, and we will bring our patients with us. GP teams across England have almost 1.4 million patient contacts a day. That’s a lot of conversations, and we all want the same thing: access to continuity of care with their family doctor in a local GP surgery that has the right balance of GPs, nurses, and other staff, and is well-resourced to meet their needs today, tomorrow and in the months and years ahead. It’s what patients want, and it’s what GPs want too.

“GPC England meets today, to consider the profession’s next steps, in a move emboldened by 2,400 newly registered BMA GP members.”

Results

Results of the referendum are as follows:

- 19,009 votes were cast
- 18,854 (99.2%) voted - **No**
- 155 (0.8%) voted - **Yes**
- Turnout was **61.2%**

Watch the video by Dr Katie Bramall-Stainer, chair of GPC England [Follow this link.](#)

Article written by Mr Nick Turner, Practice Support Officer, Lincolnshire LMC

REBUILD GENERAL PRACTICE PATIENT ENGAGEMENT TOOLKIT

NHS England is currently contacting a group of 1,487 women at very high risk of breast cancer following chest radiotherapy for Hodgkin lymphoma, after NHSE was alerted that some of these women treated when aged between 10 to 35 years during 1962 to 2003 may not have been invited for this annual testing.

NHSE has sent a letter apologising for

what has happened and NHS breast screening services will follow up by offering appointments.

Anyone who thinks they might be in this group can get further information and support from a dedicated helpline: 0345 8778962

More information can be found on the [NHS website](#)

GP CONTRACT CHANGES FOR 2024/25 (GMS AND QOF)

From 1st April, there changes were made to the GMS contract with equivalent changes applied to PMS and APMS contracts. You can see more information about the contract changes [here](#).

The global sum is a figure of £107.57 per patient based on the contractor weighted population figure.

Practices under GMS, PMS and APMS contracts will all see an uplift of £2.84 per weighted patient (unless the contract specifies the raw list).

[**CONTINUE READING...**](#)

Article written by Kate Pilton, Chief Operating Officer, Lincolnshire LMC

ANNUAL FLU LETTER

The tripartite annual flu letter for 2024/25 has now been published: [National flu immunisation programme 2024 to 2025 letter - GOV.UK \(www.gov.uk\)](#).

The letter sets out for providers the details of which cohorts are eligible for a flu vaccine in 2024/25 and which vaccines will be reimbursable. There are no changes to the cohorts for next year's programme, but based on JCVI advice, there are changes to the timing of the adult programme.

NHSE will aim to publish the flu service specifications shortly.

Article written by Kate Pilton, Chief Operating Officer, Lincolnshire LMC

VERY HIGH-RISK BREAST SCREENING

NHS England is currently contacting a group of 1,487 women at very high risk of breast cancer following chest radiotherapy for Hodgkin lymphoma, after NHSE was alerted that some of these women treated when aged between 10 to 35 years during 1962 to 2003 may not have been invited for this annual testing.

NHSE has sent a letter apologising for what has happened and NHS breast screening services will follow up by offering appointments.

Anyone who thinks they might be in this group can get further information and support from a dedicated helpline: 0345 8778962

More information can be found on the [NHS website](#)

Article written by Kate Pilton, Chief Operating Officer, Lincolnshire LMC

A REMINDER ABOUT LMC BUYING GROUP MEMBERSHIP

The LMC Buying Group helps GP practices save money on products and services they regularly buy. The Buying Group have negotiated excellent discounts on a wide range of products and services from their approved suppliers.

Buying Group membership is completely free and there is no compulsion to use all the suppliers. They do the hard work associated with finding the most competitive suppliers in cost and customer service, so they save you time as well as money on your purchasing!

Although the Buying Group was originally set up to help GP practices save money on the products and services they regularly buy, membership is now also open to GP Federations and Primary Care Networks.

Why use the Buying Group?

- No membership fees
- Excellent negotiated discounts from a range of suppliers
- Quality products and services
- Free cost analysis for members
- No need to 'shop around' anymore – we've done the hard work already!
- Access to a recruitment platform to advertise your clinical and non-clinical roles for free and a premium 'Featured Job' package for a small fee.
- Access to a community resource hub

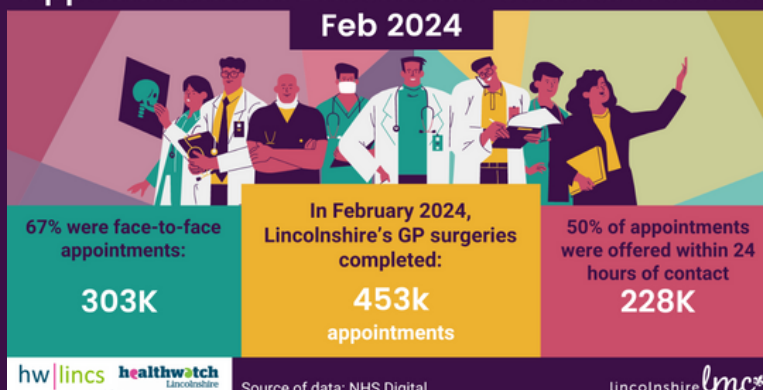
If you're not sure whether you're a member and/or have access to the Buying Group website (this is where you can view the pricing/discounts and get quotes) then contact the Buying Group team on 0115 979 6910 or info@lmcbuyinggroups.co.uk.

They can also help you with any questions you might have about your membership or the suppliers.

APPOINTMENT INFOGRAPHICS

Appointments in Lincolnshire General Practice

Feb 2024



Available to view and download via the LMC Website go to:

<https://www.lincslmc.co.uk/infographics>

VACANCIES IN LINCOLNSHIRE GENERAL PRACTICE



[CLICK HERE FOR ALL LINCOLNSHIRE PRACTICE VACANCIES](#)

If you would like your job listing advertised on our website, please send the advert to info@lincslmc.co.uk

Your advert should preferably be sent to us as a word document.

Additional attachments to be sent as PDFs.

Your advert should only be one A4 page and should include:

- Job title
- Location
- Practice logo or image
- Short overview of the role or the practice.
- Salary and any benefits
- Contact information & how to apply
- Link to your practice's website
- Closing date of job listing

TAKE-30 SERVICE

Take-30 Service

Our Take-30 phone support service is available for all Lincolnshire practice staff between 10am and 4pm, weekdays.

This is a great opportunity to talk through daily challenges with someone that understands what it is like working in a practice.

Don't bottle things up, offload! Take-30 and let's talk things through in a safe, supportive environment.

Have a friendly, confidential conversation with a trained mentor, contact us:

@ info@lincslmc.co.uk

📞 01522 576659



LINCOLNSHIRE PRACTICE MANAGEMENT CONFERENCE

Bookings are live!

We are excited to announce the Practice Management Conference 2024 is now open for bookings!

Join us at this highly acclaimed two day conference for managers working in Lincolnshire General Practice! We aim to make this the highlight of the practice management year with something for everyone!

Once again have arranged on-point speakers covering essential updates, hot topics and other useful practice related seminars as well as practical workshops to make the most of your valuable time.

Do not miss this opportunity to come together to learn, receive updates, strengthen your network and have a great time in the process!

Open to all:

- Experienced Practice Managers
- Practice Managers new to the role
- Practice staff in a management position
- Team leaders
- Aspiring/ up and coming Practice Managers
- PCN Managers
- Project Managers

[Click here for details and bookings!](#)

YOUR LMC DAY!

Tuesday 9th July
Doddington Hall, Nr Lincoln

[BOOK HERE!](#)

We are delighted to once again invite you this beautiful setting for a second "Your LMC Day".

The day will be filled with important updates, delicious food and plenty of opportunity to network with peers.

Go to www.lincslmc.co.uk/events

Topics:

- Your LMC update - Review of the year
- CQC Updated Top Tips
- GPC Update
- Managing Challenging Patients & Avoiding Complaints
- Primary/ Secondary Care Interface
- 'The things you do that maybe you don't have to' - Update

CQRS – QOF 2023/24 VI001 INDICATOR DISCREPANCY

CQRS is aware of an issue with the VI001 indicator and the way in which the QOF points have been calculated by clinical systems for this particular indicator.

Some clinical systems have calculated the QOF points value for the VI001 indicator incorrectly, so whilst the figures (in terms of patient numbers) are the same on both CQRS and clinical systems, CQRS is reporting a lower QOF points value.

[Continue reading here.](#)

Article written by Kate Pilton, Chief Operating Officer, Lincolnshire LMC

UPDATE ON MMR VACCINATIONS FOR PRACTICE STAFF (CNSGP)

Some clinical systems have calculated the QOF points value for the VI001 indicator incorrectly, so whilst the figures (in terms of patient numbers) are the same on both CQRS and clinical systems, CQRS is reporting a lower QOF points value.

[Continue reading here.](#)

Article written by Kate Pilton, Chief Operating Officer, Lincolnshire LMC

GP CONNECT ISSUE

Update Record allows information about patient consultations outside of general practice to be shared safely with general practice, so the information can be updated in the patient record.

The messages are 'structured' which means they transfer into the GP system in a consistent and standardised way that systems can 'read'. This allows them to be easily filed.

The system will be rolled out incrementally from March 2024... [CONTINUE READING...](#)

LINCOLNSHIRE DISPENSING PRACTICES DAY

Gain an update on the latest dispensing hot topics and increase your knowledge in some tricky dispensing areas.

[BOOK HERE!](#)

Wednesday 17th July
Dower House Hotel, Woodhall Spa

You are invited to join us in more beautiful surroundings for this interesting and useful day for Lincolnshire Dispensing Practices.

The day will be filled with important updates, great food and plenty of opportunity to network with peers and sponsors.

Topics to include:

- Understanding the drug tariff
- Understanding VAT -
 - broken down into digestible pieces
- NHS BSA Prescribing Service
- Controlled Drugs including -
 - good management practice
 - understanding the register
 - accounting errors
 - when to report
 - exemption certificates
- ePACT (TBC)

Online bookings and payments update:

Online bookings for events and training that require payments have now moved to online payments only. The aim is to make the bookings and payments process more efficient and easier for practices complete. All bookings must now be put through the website however if you need assistance we will still endeavour to help where possible as usual.

Bookings Now Open:

- **[NB Medical Clinical Hot Topics Update](#)** - Wednesday 8th May - The Dower House Hotel, Woodhall Spa. We are delighted to once again offer Lincolnshire GPs and advanced clinicians the opportunity to attend the NB Medical Spring Hot Topics GP Update course. **[BOOK HERE!](#)**
- **[Lincolnshire LMC Day](#)** - Tuesday 9th July - Doddington Hall, Lincoln . Join us in this beautiful setting for a second "Your LMC Day". The day will be filled with important updates, delicious food and plenty of opportunity to network with peers. **[BOOK HERE!](#)**
- **[Dispensing Practice Day](#)** - Wednesday 17th July - The Dower House Hotel, Woodhall Spa. **[BOOK HERE!](#)**
- **[Lincolnshire Practice Manager's Conference](#)** - Thursday 12th & Friday 13th September - Belton Woods Hotel, Grantham **[BOOK HERE!](#)**

COMING SOON

SAVE THE DATE - **[Lincolnshire GP Conference](#)** - Friday 15th & Saturday 16th November - Doubletree By Hilton, Lincoln.

Regular educational events for practice teams

We continue to run a range of educational courses, webinars and events for GPs, managers and their teams. All of these can be viewed on the **[LMC Training & Events pages](#)**. If you have any questions about LMC training please email us at **info@lincslmc.co.uk**

EXTERNAL EVENTS



EURIPA Forum June 2024

LIRCH is hosting the 13th EURIPA forum at the Lincoln Medical School from June 20th to 22nd this year.

Tackling Health Inequalities In Rural and Remote Communities

EURIPA is the European Rural and Isolated Practitioners Association – see website here: <https://www.euripa.org/>

13th EURIPA Rural Health Forum
Lincoln, United Kingdom
20-22 June 2024

The purpose of EURIPA is to support rural and isolated family GPs and address the health and wellbeing needs of rural communities.

The title of this year's conference is : Tackling Health Inequalities in Rural and Remote Communities.

SAVE THE DATE

This is the first time that the conference has been hosted in the UK, and it is a real opportunity for our institute and key partners to highlight the initiatives that are being undertaken in Lincolnshire to address health inequalities in rural and coastal communities.

EURIPA is an offshoot of WONCA (World Organisation of Family Doctors) : [World Organization of Family Doctors \(WONCA\)](http://WorldOrganizationofFamilyDoctors(WONCA).globalfamilydoctor.com) (globalfamilydoctor.com).

It is also very timely that we are hosting the event this summer as we launch the new Lincoln Institute for Rural and Coastal Health (LIRCH) funded by the E3 grant.

The event is also being supported by the Royal College of General Practitioners.

We are very keen to maximise attendance at the event by widely promoting this to Lincolnshire GPs and healthcare practitioners.

Registration is currently open and abstracts are still being accepted for the event: <https://forum.euripa.org/page/abstract-submission>



ORO-SYSTEMIC DISEASE – AN ANATOMICAL LINK



Lincolnshire Local Dental Committee Annual Clinical Lecture

Thursday 18th April 2024, 6:15pm for 7pm Lecture Theatre, Bishop Grosseteste University, Longdales Rd, Lincoln LN1 3DY

Delivered by Dr Graham Lloyd-Jones, Consultant Radiologist at Salisbury Hospital.

THIS LECTURE is free - HOT SUPPER PROVIDED

Learning Outcomes: In this presentation you will learn:

- Anatomical concepts relating to oro-systemic diseases.
- Conventional COVID-19 lung disease modelling versus vascular viral entry from the mouth.
- Links between gum disease and multiple systemic diseases - and related mechanisms.
- Concepts of causality - biological plausibility and holistic anatomical approach.
- Messages dentists should be encouraged to share with their patients.
- Potential ways in which dentists and doctors should be collaborating clinically.

Bookings via the Lincs LDC Website www.Lincslcdc.com/events

MENTORING AND COACHING

Our trained mentors can support you to make positive steps forward in your career and personal life.

MENTORING & COACHING CAN BENEFIT YOU AND YOUR ORGANISATION IN MANY WAYS:



- Help to make improvements to your work life balance
- Allow you to manage transitions positively
- Create a positive focus on achieving your aspirations
- Improve your motivation



- Develop & enhance your leadership skills
- Improve your resilience
- Build your confidence

01522 576659 | INFO@LINCSELMC.CO.UK

www.lincselmc.co.uk/wellbeing

This service is available free of charge for Lincolnshire GPs, Nurses & Practice Managers .

USEFUL LINKS

Training resources:

- [Lincolnshire Training Hub](#)
- [E-Learning for Health \(e-LfH\) Programmes](#)
- [NB Medical Education](#)
- [GP Forum CPD Opportunities](#)

Wellbeing Resources:

- [10 Top Tips Wellbeing Poster](#)
- [Mentoring & Coaching Poster](#)
- [Take-30 Poster](#)
- [LMC Wellbeing_page](#)

Networking:

- [Lincoln Medical Society](#)

Newsletters:

- [Sessional GPs e-newsletter](#)
- [GP Weekly Bulletin \(England\)](#)
- [GP Trainee Newsletter](#)
- [Practice Manager Association News](#)
- [The Cameron Fund newsletter Autumn 23](#)

Buying Group:

- www.lmcbuyinggroups.co.uk



FOLLOW US

